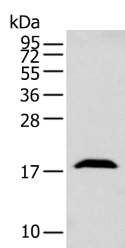


GMFB Polyclonal Antibody

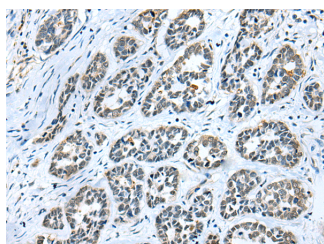
Catalog No.	E-AB-52314	Reactivity	H,M,R
Storage	Store at -20°C. Avoid freeze / thaw cycles.	Host	Rabbit
Applications	WB,IHC,ELISA	Isotype	IgG

Note: Centrifuge before opening to ensure complete recovery of vial contents.

Images



Western blot analysis of Mouse brain tissue using GMFB Polyclonal Antibody at dilution of 1:250



Immunohistochemistry of paraffin-embedded Human esophagus cancer tissue using GMFB Polyclonal Antibody at dilution of 1:25(×200)

Immunogen Information

Immunogen	Fusion protein of human GMFB
Gene Accession	BC005359
Swissprot	P60983
Synonyms	Glia maturation factor beta,GMF,GMF-beta,GMFB,GMFB

Product Information

Calculated MW	17 kDa
Observed MW	Refer to figures
Buffer	PBS with 0.05% NaN ₃ and 40% Glycerol,pH7.4
Purify	Antigen affinity purification
Dilution	WB 1:500-1:2000, IHC 1:10-1:50, ELISA 1:5000-1:10000

Background

GMFB,Glia maturation factor beta,is a nerve growth factor implicated in nervous system development. It was reported that GMF-beta promotes the phenotypic expression of glia and neurons and inhibits the proliferation of their respective tumors in culture cells. GMF-beta protein is specific to the brain where it is expressed in glial cells (mainly astrocytes) and insome neurons. Higher levels of GMFB were found in the central nervous system,except for the spinal cord,and in thymus and colon.

For Research Use Only

Thank you for your recent purchase.
 If you would like to learn more about antibodies,please visit www.elabscience.com.

**Focus on your research
 Service for life science**

Applications:WB-Western Blot IHC-Immunohistochemistry IF-Immunofluorescence IP-Immunoprecipitation FC-Flow cytometry ChIP-Chromatin Immunoprecipitation Reactivity: H-Human R-Rat M-Mouse Mk-Monkey Dg-Dog Ch-Chicken Hm-Hamster Rb-Rabbit Sh-Sheep Pg-Pig Z-Zebrafish X-Xenopus C-Cow.