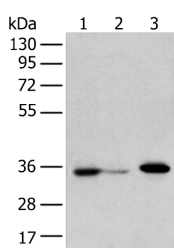


## DHR SX Polyclonal Antibody

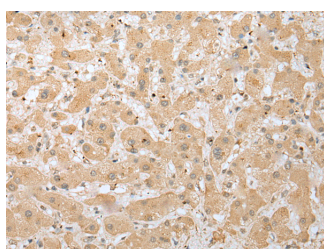
<b>Catalog No.</b>	E-AB-52315	<b>Reactivity</b>	H
<b>Storage</b>	Store at -20°C. Avoid freeze / thaw cycles.	<b>Host</b>	Rabbit
<b>Applications</b>	WB,IHC,ELISA	<b>Isotype</b>	IgG

**Note:** Centrifuge before opening to ensure complete recovery of vial contents.

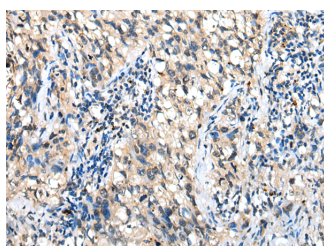
### Images



Western blot analysis of HepG2 cell Hela cell and A549 cell using DHR SX Polyclonal Antibody at dilution of 1:350



Immunohistochemistry of paraffin-embedded Human liver cancer tissue using DHR SX Polyclonal Antibody at dilution of 1:30(×200)



Immunohistochemistry of paraffin-embedded Human lung cancer tissue using DHR SX Polyclonal Antibody at dilution of 1:30(×200)

### Immunogen Information

<b>Immunogen</b>	Fusion protein of human DHR SX
<b>Gene Accession</b>	BC032340
<b>Swissprot</b>	Q8N5I4
<b>Synonyms</b>	CXorf11,DHR S5X,DHR S5Y,DHR SX,DHR SX,DHR SXY,DHR SY,RP11 325D5.2

### Product Information

<b>Calculated MW</b>	36 kDa
<b>Observed MW</b>	Refer to figures
<b>Buffer</b>	PBS with 0.05% NaN <sub>3</sub> and 40% Glycerol,pH7.4
<b>Purify</b>	Antigen affinity purification
<b>Dilution</b>	WB 1:500-1:2000, IHC 1:25-1:100, ELISA 1:5000-1:10000

### Background

DHR SX (dehydrogenase/reductase SDR family member on chromosome X) is a 330 amino acid protein belonging to the short-chain dehydrogenases/reductases (SDR) family. Widely expressed, DHR SX is an oxidoreductase that contains a coenzyme binding site and a substrate binding site, indicating a possible role in cellular metabolism. The gene that encodes DHR SX is located in the pseudoautosomal region 1 (PAR1) of X and Y chromosomes. The X and Y chromosomes are the human sex chromosomes. Chromosome X consists of about 153 million base pairs and nearly 1,000 genes.

### For Research Use Only

Thank you for your recent purchase.  
 If you would like to learn more about antibodies, please visit [www.elabscience.com](http://www.elabscience.com).

**Focus on your research  
 Service for life science**

Applications:WB-Western Blot IHC-Immunohistochemistry IF-Immunofluorescence IP-Immunoprecipitation FC-Flow cytometry ChIP-Chromatin Immunoprecipitation Reactivity: H-Human R-Rat M-Mouse Mk-Monkey Dg-Dog Ch-Chicken Hm-Hamster Rb-Rabbit Sh-Sheep Pg-Pig Z-Zebrafish X-Xenopus C-Cow.