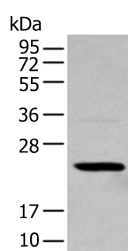


TCEAL4 Polyclonal Antibody

Catalog No.	E-AB-52332	Reactivity	H
Storage	Store at -20°C. Avoid freeze / thaw cycles.	Host	Rabbit
Applications	WB,ELISA	Isotype	IgG

Note: Centrifuge before opening to ensure complete recovery of vial contents.

Images



Western blot analysis of 293T cell using TCEAL4 Polyclonal Antibody at dilution of 1:250

Immunogen Information

Immunogen	Full length fusion protein
Gene Accession	BC012296
Swissprot	Q96EI5
Synonyms	TCAL4,TCEA like protein 4,TCEAL4,Transcription elongation factor A like 4,Transcription elongation factor S-II protein-like 4

Product Information

Calculated MW	25 kDa
Observed MW	Refer to figures
Buffer	PBS with 0.05% NaN ₃ and 40% Glycerol,pH7.4
Purify	Antigen affinity purification
Dilution	WB 1:500-1:2000, ELISA 1:5000-1:10000

Background

This gene encodes a member of the transcription elongation factor A (SII)-like (TCEAL) gene family. This family is comprised of nuclear phosphoproteins that modulate transcription in a promoter context-dependent manner. Multiple family members are located on the X chromosome. Alternatively splicing results in multiple transcript variants. There is a pseudogene for this gene on chromosome 13.

For Research Use Only

Thank you for your recent purchase.
 If you would like to learn more about antibodies, please visit www.elabscience.com.

**Focus on your research
 Service for life science**

Applications:WB-Western Blot IHC-Immunohistochemistry IF-Immunofluorescence IP-Immunoprecipitation FC-Flow cytometry ChIP-Chromatin Immunoprecipitation Reactivity: H-Human R-Rat M-Mouse Mk-Monkey Dg-Dog Ch-Chicken Hm-Hamster Rb-Rabbit Sh-Sheep Pg-Pig Z-Zebrafish X-Xenopus C-Cow.