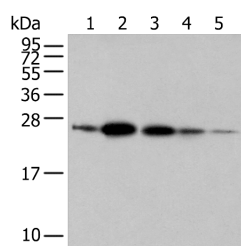


RAB11A Polyclonal Antibody

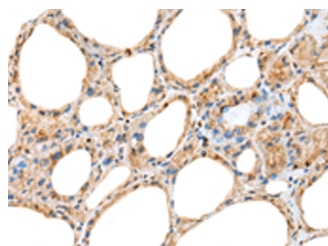
Catalog No.	E-AB-52335	Reactivity	H,M,R
Storage	Store at -20°C. Avoid freeze / thaw cycles.	Host	Rabbit
Applications	WB,IHC,ELISA	Isotype	IgG

Note: Centrifuge before opening to ensure complete recovery of vial contents.

Images



Western blot analysis of 293T A549 and 231 cell Human fetal brain tissue Human placenta tissue using RAB11A Polyclonal Antibody at dilution of 1:500



Immunohistochemistry of paraffin-embedded Human thyroid cancer tissue using RAB11A Polyclonal Antibody at dilution of 1:45(×200)

Immunogen Information

Immunogen	Full length fusion protein
Gene Accession	BC013348
Swissprot	P62491
Synonyms	MGC1490,Rab 11,Rab 11A,RAB 11A,Rab-11,RAB11 A,RAB11,Rab11a,Ras-related protein Rab-11A,RB11A,YL 8,YL8

Product Information

Calculated MW	24 kDa
Observed MW	Refer to figures
Buffer	PBS with 0.05% NaN ₃ and 40% Glycerol,pH7.4
Purify	Antigen affinity purification
Dilution	WB 1:500-1:2000, IHC 1:30-1:150, ELISA 1:5000-1:10000

Background

The protein encoded by this gene belongs to the Rab family of the small GTPase superfamily. It is associated with both constitutive and regulated secretory pathways, and may be involved in protein transport. Two transcript variants encoding different isoforms have been found for this gene.

For Research Use Only

Thank you for your recent purchase.
 If you would like to learn more about antibodies, please visit www.elabscience.com.

**Focus on your research
 Service for life science**

Applications:WB-Western Blot IHC-Immunohistochemistry IF-Immunofluorescence IP-Immunoprecipitation FC-Flow cytometry ChIP-Chromatin Immunoprecipitation Reactivity: H-Human R-Rat M-Mouse Mk-Monkey Dg-Dog Ch-Chicken Hm-Hamster Rb-Rabbit Sh-Sheep Pg-Pig Z-Zebrafish X-Xenopus C-Cow.