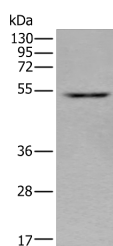


ZNF672 Polyclonal Antibody

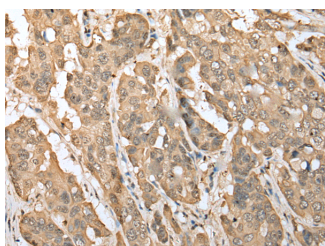
Catalog No.	E-AB-52339	Reactivity	H
Storage	Store at -20°C. Avoid freeze / thaw cycles.	Host	Rabbit
Applications	WB,IHC,ELISA	Isotype	IgG

Note: Centrifuge before opening to ensure complete recovery of vial contents.

Images



Western blot analysis of HEPG2 cell lysate using ZNF672 Polyclonal Antibody at dilution of 1:350



Immunohistochemistry of paraffin-embedded Human breast cancer tissue using ZNF672 Polyclonal Antibody at dilution of 1:30(×200)

Immunogen Information

Immunogen	Full length fusion protein
Gene Accession	BC008872
Swissprot	Q499Z4
Synonyms	FLJ22301,Zinc finger protein 672,ZN672,Znf672

Product Information

Calculated MW	50 kDa
Observed MW	Refer to figures
Buffer	PBS with 0.05% NaN ₃ and 40% Glycerol,pH7.4
Purify	Antigen affinity purification
Dilution	WB 1:500-1:2000, IHC 1:25-1:100, ELISA 1:5000-1:10000

Background

ZNF672 (zinc finger protein 672) is a 452 amino acid nuclear protein that may be involved in transcriptional regulation. Belonging to the Krüppel C2H2-type zinc-finger protein family, ZNF672 contains 14 C2H2-type zinc fingers. ZNF672 exists as two alternatively spliced isoforms, and is encoded by a gene that maps to human chromosome 1q44. Human chromosome 1 spans 260 million base pairs, contains over 3,000 genes, comprises nearly 8% of the human genome, and houses a large number of disease-associated genes, including those that are involved in familial adenomatous polyposis, Stickler syndrome, Parkinson's disease, Gaucher disease, schizophrenia and Usher syndrome.

For Research Use Only

Thank you for your recent purchase.
 If you would like to learn more about antibodies, please visit www.elabscience.com.

**Focus on your research
 Service for life science**

Applications:WB-Western Blot IHC-Immunohistochemistry IF-Immunofluorescence IP-Immunoprecipitation FC-Flow cytometry ChIP-Chromatin Immunoprecipitation Reactivity: H-Human R-Rat M-Mouse Mk-Monkey Dg-Dog Ch-Chicken Hm-Hamster Rb-Rabbit Sh-Sheep Pg-Pig Z-Zebrafish X-Xenopus C-Cow.