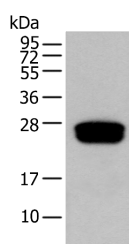


GLIPR1L1 Polyclonal Antibody

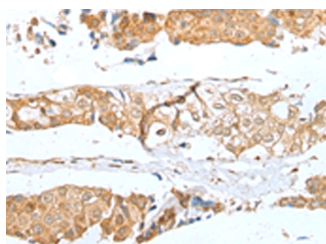
Catalog No.	E-AB-52347	Reactivity	H
Storage	Store at -20°C. Avoid freeze / thaw cycles.	Host	Rabbit
Applications	WB,IHC,ELISA	Isotype	IgG

Note: Centrifuge before opening to ensure complete recovery of vial contents.

Images



Western blot analysis of Human testis tissue using GLIPR1L1 Polyclonal Antibody at dilution of 1:300



Immunohistochemistry of paraffin-embedded Human breast cancer tissue using GLIPR1L1 Polyclonal Antibody at dilution of 1:25(x200)

Immunogen Information

Immunogen	Fusion protein of human GLIPR1L1
Gene Accession	BC014603
Swissprot	Q6UWM5
Synonyms	ALKN2972, GLI pathogenesis-related 1 like 1, GLIPR1-like protein 1, GLIPR1L1, GPRL1, MGC26856, PRO7434, UNQ2972/PRO7434

Product Information

Calculated MW	27 kDa
Observed MW	Refer to figures
Buffer	PBS with 0.05% NaN ₃ and 40% Glycerol, pH7.4
Purify	Antigen affinity purification
Dilution	WB 1:500-1:2000, IHC 1:25-1:100, ELISA 1:5000-1:10000

Background

The GLIPR1 (glioma pathogenesis-related 1) family consists of three core members, designated GLIPR1, GLIPR1L1 (GLIPR1-like protein 1) and GLIPR1L2, which form a distinct subgroup within the cysteine-rich secretory protein (CRISP), antigen 5 and pathogenesis-related 1 (CAP) superfamily. Each member of the CAP superfamily has a conserved N-terminal CAP domain and a distinct C-terminal extension. CAP superfamily proteins are hypothesized to have roles in immunity, cell adhesion, carcinogenesis and male fertility. GLIPR1L1 is a 242 amino acid secreted protein. Highly expressed in testis, GLIPR1L1 exists as two isoforms produced by alternative splicing events. GLIPR1L1 is encoded by a gene that maps to human chromosome 12q21.1 and mouse chromosome 10 D2. The function of this protein remains unknown.

For Research Use Only

Thank you for your recent purchase.
 If you would like to learn more about antibodies, please visit www.elabscience.com.

Focus on your research
Service for life science

Applications: WB-Western Blot IHC-Immunohistochemistry IF-Immunofluorescence IP-Immunoprecipitation FC-Flow cytometry ChIP-Chromatin Immunoprecipitation Reactivity: H-Human R-Rat M-Mouse Mk-Monkey Dg-Dog Ch-Chicken Hm-Hamster Rb-Rabbit Sh-Sheep Pg-Pig Z-Zebrafish X-Xenopus C-Cow.