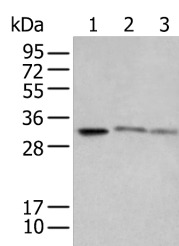


SPIC Polyclonal Antibody

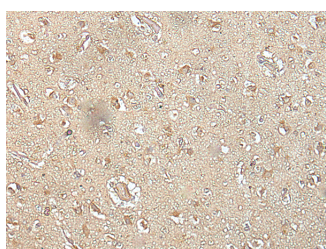
Catalog No.	E-AB-52357	Reactivity	H,M
Storage	Store at -20°C. Avoid freeze / thaw cycles.	Host	Rabbit
Applications	WB,IHC,ELISA	Isotype	IgG

Note: Centrifuge before opening to ensure complete recovery of vial contents.

Images



Western blot analysis of SP20 Raji and Jurkat cell lysates using SPIC Polyclonal Antibody at dilution of 1:650



Immunohistochemistry of paraffin-embedded Human brain tissue using SPIC Polyclonal Antibody at dilution of 1:35(×200)

Immunogen Information

Immunogen	Full length fusion protein
Gene Accession	BC032317
Swissprot	Q8N5J4
Synonyms	Prf,Pu.1 related factor,Spi C,spiC,SPIC,Transcription factor Spi-C

Product Information

Calculated MW	29 kDa
Observed MW	Refer to figures
Buffer	PBS with 0.05% NaN ₃ and 40% Glycerol,pH7.4
Purify	Antigen affinity purification
Dilution	WB 1:500-1:2000, IHC 1:25-1:100, ELISA 1:5000-1:10000

Background

The protein encoded by this gene regulates the development of red pulp macrophages, which are necessary for iron homeostasis and the recycling of red blood cells.

For Research Use Only

Thank you for your recent purchase.
 If you would like to learn more about antibodies, please visit www.elabscience.com.

**Focus on your research
 Service for life science**

Applications:WB-Western Blot IHC-Immunohistochemistry IF-Immunofluorescence IP-Immunoprecipitation FC-Flow cytometry ChIP-Chromatin Immunoprecipitation Reactivity: H-Human R-Rat M-Mouse Mk-Monkey Dg-Dog Ch-Chicken Hm-Hamster Rb-Rabbit Sh-Sheep Pg-Pig Z-Zebrafish X-Xenopus C-Cow.