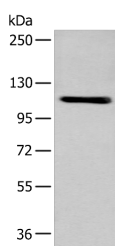


## ZNF281 Polyclonal Antibody

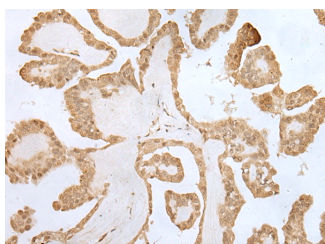
<b>Catalog No.</b>	E-AB-52368	<b>Reactivity</b>	H,M
<b>Storage</b>	Store at -20°C. Avoid freeze / thaw cycles.	<b>Host</b>	Rabbit
<b>Applications</b>	WB,IHC,ELISA	<b>Isotype</b>	IgG

**Note:** Centrifuge before opening to ensure complete recovery of vial contents.

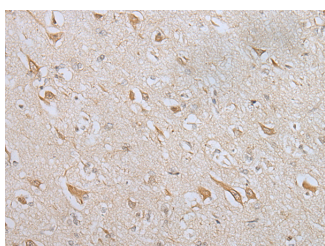
### Images



Western blot analysis of A549 cell using ZNF281 Polyclonal Antibody at dilution of 1:600



Immunohistochemistry of paraffin-embedded Human thyroid cancer tissue using ZNF281 Polyclonal Antibody at dilution of 1:70(×200)



Immunohistochemistry of paraffin-embedded Human brain tissue using ZNF281 Polyclonal Antibody at dilution of 1:70(×200)

### Immunogen Information

<b>Immunogen</b>	Fusion protein of human ZNF281
<b>Gene Accession</b>	BC060820
<b>Swissprot</b>	Q9Y2X9
<b>Synonyms</b>	GZP1, Transcription factor ZBP-99, ZBP99, ZBP99, zfp281, Zinc finger DNA binding protein 99, ZN281, ZNF281, ZNP 99, ZNP 99 transcription factor, ZNP99

### Product Information

<b>Calculated MW</b>	97 kDa
<b>Observed MW</b>	Refer to figures
<b>Buffer</b>	PBS with 0.05% NaN <sub>3</sub> and 40% Glycerol, pH7.4
<b>Purify</b>	Antigen affinity purification
<b>Dilution</b>	WB 1:500-1:2000, IHC 1:60-1:450, ELISA 1:5000-1:10000

### Background

ZNF281, also known as GC-box-binding zinc finger protein 1, ZBP-99 or ZNP-99 (zinc finger DNA-binding protein 99), is a zinc finger protein that belongs to the Krüppel C2H2-type zinc finger protein family. It is expressed ubiquitously at low levels with predominant expression in kidney, liver, lymphocytes and placenta. ZNF281 localizes to the nucleus and contains four C2H2-type zinc fingers. ZNF281 plays a role in repressing the transcription of a variety of genes including Gastrin and ODC (ornithine decarboxylase). In particular, ZNF281 functions by binding to the G-rich box in the enhancer region of the gene. Upon DNA damage, ZNF281 may become phosphorylated by Atm or ATR.

### For Research Use Only

Thank you for your recent purchase.  
 If you would like to learn more about antibodies, please visit [www.elabscience.com](http://www.elabscience.com).

### Focus on your research Service for life science

Applications: WB-Western Blot IHC-Immunohistochemistry IF-Immunofluorescence IP-Immunoprecipitation FC-Flow cytometry ChIP-Chromatin Immunoprecipitation Reactivity: H-Human R-Rat M-Mouse Mk-Monkey Dg-Dog Ch-Chicken Hm-Hamster Rb-Rabbit Sh-Sheep Pg-Pig Z-Zebrafish X-Xenopus C-Cow.