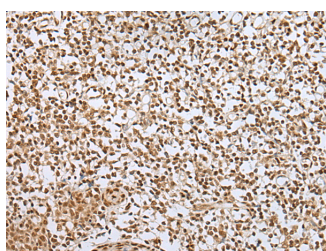


## ZNF354A Polyclonal Antibody

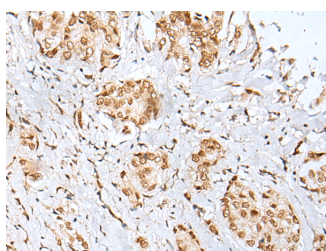
<b>Catalog No.</b>	E-AB-52385	<b>Reactivity</b>	H,M,R
<b>Storage</b>	Store at -20°C. Avoid freeze / thaw cycles.	<b>Host</b>	Rabbit
<b>Applications</b>	IHC,ELISA	<b>Isotype</b>	IgG

**Note:** Centrifuge before opening to ensure complete recovery of vial contents.

### Images



Immunohistochemistry of paraffin-embedded Human tonsil tissue using ZNF354A Polyclonal Antibody at dilution of 1:40(×200)



Immunohistochemistry of paraffin-embedded Human breast cancer tissue using ZNF354A Polyclonal Antibody at dilution of 1:40(×200)

### Immunogen Information

<b>Immunogen</b>	Fusion protein of human ZNF354A
<b>Gene Accession</b>	BC047105
<b>Swissprot</b>	O60765
<b>Synonyms</b>	EZNF,HKL1,HLK1,Homo sapiens zinc finger protein 354A,KID 1,TCF-17,TCF17,Transcription factor 17,Z354A,ZNF354A

### Product Information

<b>Buffer</b>	PBS with 0.05% NaN <sub>3</sub> and 40% Glycerol,pH7.4
<b>Purify</b>	Antigen affinity purification
<b>Dilution</b>	IHC 1:30-1:150, ELISA 1:5000-1:10000

### Background

ZNF354A, also called EZNF, KID-1 or TCF17, belongs to the Krüppel C2H2-type zinc-finger family of proteins that contain KRAB domains and act as transcriptional regulators. Expressed primarily in the adult kidney, ZNF354A is a transcriptional repressor that plays a role in late renal development and is suppressed after renal ischemia. The N-terminus of ZNF354A contains the KRAB domain which confers transcriptional repressor activity, while the C-terminus contains multiple Cys2His2-zinc fingers. ZNF354A is located in the nucleolus and is thought to specifically influence development of the proximal tubule by shutting off dispensable or inhibitory genes. Reduced ZNF354A expression prevents proper cell differentiation and may, therefore, be implicated in renal carcinoma.

#### For Research Use Only

Thank you for your recent purchase.  
 If you would like to learn more about antibodies, please visit [www.elabscience.com](http://www.elabscience.com).

**Focus on your research  
 Service for life science**

Applications:WB-Western Blot IHC-Immunohistochemistry IF-Immunofluorescence IP-Immunoprecipitation FC-Flow cytometry ChIP-Chromatin Immunoprecipitation Reactivity: H-Human R-Rat M-Mouse Mk-Monkey Dg-Dog Ch-Chicken Hm-Hamster Rb-Rabbit Sh-Sheep Pg-Pig Z-Zebrafish X-Xenopus C-Cow.