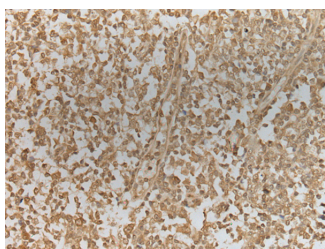


## ZNF8 Polyclonal Antibody

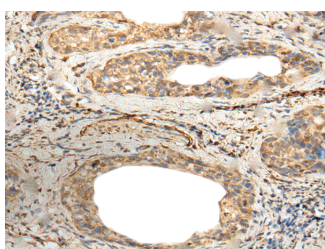
<b>Catalog No.</b>	E-AB-52395	<b>Reactivity</b>	H
<b>Storage</b>	Store at -20°C. Avoid freeze / thaw cycles.	<b>Host</b>	Rabbit
<b>Applications</b>	IHC,ELISA	<b>Isotype</b>	IgG

**Note:** Centrifuge before opening to ensure complete recovery of vial contents.

### Images



Immunohistochemistry of paraffin-embedded Human tonsil tissue using ZNF8 Polyclonal Antibody at dilution of 1:40(×200)



Immunohistochemistry of paraffin-embedded Human cervical cancer tissue using ZNF8 Polyclonal Antibody at dilution of 1:40(×200)

### Immunogen Information

<b>Immunogen</b>	Fusion protein of human ZNF8
<b>Gene Accession</b>	BC039323
<b>Swissprot</b>	P17098
<b>Synonyms</b>	HF.18,Zfp128,Zinc finger protein 272,Zinc finger protein 8 (clone HF.18),Zinc finger protein 8,Zinc finger protein HF.18,ZNF 8,ZNF8,ZNF8

### Product Information

<b>Buffer</b>	PBS with 0.05% NaN <sub>3</sub> and 40% Glycerol,pH7.4
<b>Purify</b>	Antigen affinity purification
<b>Dilution</b>	IHC 1:30-1:150, ELISA 1:2000-1:5000

### Background

ZNF8 (zinc finger protein 8) is a 575 amino acid protein that belongs to the Krüppel C2H2-type zinc-finger protein family and contains seven C2H2-type zinc fingers and a KRAB domain. Localizing to the nucleus and ubiquitously expressed, ZNF8 is thought to play a role in transcriptional regulation and is encoded by a gene that maps to human chromosome 19q13.43.

#### For Research Use Only

Thank you for your recent purchase.  
 If you would like to learn more about antibodies, please visit [www.elabscience.com](http://www.elabscience.com).

**Focus on your research  
 Service for life science**

Applications:WB-Western Blot IHC-Immunohistochemistry IF-Immunofluorescence IP-Immunoprecipitation FC-Flow cytometry ChIP-Chromatin Immunoprecipitation Reactivity: H-Human R-Rat M-Mouse Mk-Monkey Dg-Dog Ch-Chicken Hm-Hamster Rb-Rabbit Sh-Sheep Pg-Pig Z-Zebrafish X-Xenopus C-Cow.