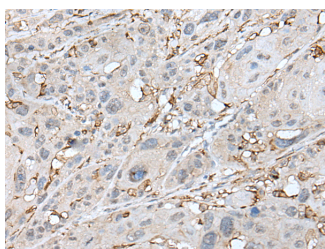


CD14 Polyclonal Antibody

Catalog No.	E-AB-52404	Reactivity	H
Storage	Store at -20°C. Avoid freeze / thaw cycles.	Host	Rabbit
Applications	IHC,ELISA	Isotype	IgG

Note: Centrifuge before opening to ensure complete recovery of vial contents.

Images



Immunohistochemistry of paraffin-embedded Human esophagus cancer tissue using CD14 Polyclonal Antibody at dilution of 1:40(×200)

Immunogen Information

Immunogen	Fusion protein of human CD14
Gene Accession	BC010507
Swissprot	P08571
Synonyms	CD 14,CD14,CD14 antigen,CD14 molecule,CD14,LPS-R,Mo2

Product Information

Buffer	PBS with 0.05% NaN ₃ and 40% Glycerol,pH7.4
Purify	Antigen affinity purification
Dilution	IHC 1:30-1:150, ELISA 1:5000-1:10000

Background

CD14 is a 50-55 kDa glycosylphosphatidylinositol-anchored glycoprotein. CD14 is preferentially expressed on monocytes and macrophages. CD14 acts as a co-receptor (along with TLR4 and MD-2) for bacterial liposaccharides (LPS). It plays a major role in the inflammatory response of monocytes to LPS.

For Research Use Only

Thank you for your recent purchase.

If you would like to learn more about antibodies, please visit www.elabscience.com.

**Focus on your research
 Service for life science**

Applications:WB-Western Blot IHC-Immunohistochemistry IF-Immunofluorescence IP-Immunoprecipitation FC-Flow cytometry ChIP-Chromatin Immunoprecipitation Reactivity: H-Human R-Rat M-Mouse Mk-Monkey Dg-Dog Ch-Chicken Hm-Hamster Rb-Rabbit Sh-Sheep Pg-Pig Z-Zebrafish X-Xenopus C-Cow.