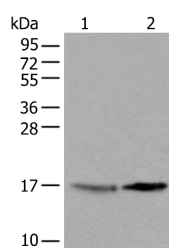


UBE2W Polyclonal Antibody

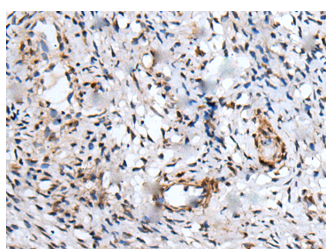
Catalog No.	E-AB-52432	Reactivity	H,M,R
Storage	Store at -20°C. Avoid freeze / thaw cycles.	Host	Rabbit
Applications	WB,IHC,ELISA	Isotype	IgG

Note: Centrifuge before opening to ensure complete recovery of vial contents.

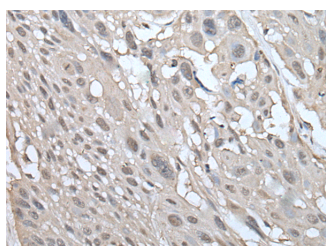
Images



Western blot analysis of 231 cell and Human cerebrum tissue lysates using UBE2W Polyclonal Antibody at dilution of 1:550



Immunohistochemistry of paraffin-embedded Human cervical cancer tissue using UBE2W Polyclonal Antibody at dilution of 1:55(x200)



Immunohistochemistry of paraffin-embedded Human esophagus cancer tissue using UBE2W Polyclonal Antibody at dilution of 1:55(x200)

Immunogen Information

Immunogen	Full length fusion protein
Gene Accession	BC016326
Swissprot	Q96B02
Synonyms	FLJ11011,hUBC 16,Ubiquitin-protein ligase W

Product Information

Calculated MW	17 kDa
Observed MW	Refer to figures
Buffer	PBS with 0.05% NaN ₃ and 40% Glycerol,pH7.4
Purify	Antigen affinity purification
Dilution	WB 1:500-1:2000, IHC 1:40-1:250, ELISA 1:5000-1:10000

Background

This gene encodes a nuclear-localized ubiquitin-conjugating enzyme (E2) that, along with ubiquitin-activating (E1) and ligating (E3) enzymes, coordinates the addition of a ubiquitin moiety to existing proteins. The encoded protein promotes the ubiquitination of Fanconi anemia complementation group proteins and may be important in the repair of DNA damage. There is a pseudogene for this gene on chromosome 1. Alternative splicing results in multiple transcript variants.

For Research Use Only

Thank you for your recent purchase.
 If you would like to learn more about antibodies, please visit www.elabscience.com.

**Focus on your research
 Service for life science**

Applications:WB-Western Blot IHC-Immunohistochemistry IF-Immunofluorescence IP-Immunoprecipitation FC-Flow cytometry ChIP-Chromatin Immunoprecipitation Reactivity: H-Human R-Rat M-Mouse Mk-Monkey Dg-Dog Ch-Chicken Hm-Hamster Rb-Rabbit Sh-Sheep Pg-Pig Z-Zebrafish X-Xenopus C-Cow.