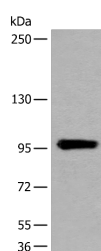


UNC45B Polyclonal Antibody

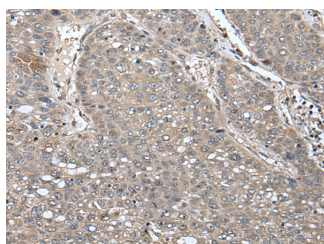
Catalog No.	E-AB-52442	Reactivity	H,M
Storage	Store at -20°C. Avoid freeze / thaw cycles.	Host	Rabbit
Applications	WB,IHC,ELISA	Isotype	IgG

Note: Centrifuge before opening to ensure complete recovery of vial contents.

Images



Western blot analysis of Human heart tissue lysate using UNC45B Polyclonal Antibody at dilution of 1:600



Immunohistochemistry of paraffin-embedded Human liver cancer tissue using UNC45B Polyclonal Antibody at dilution of 1:65(x200)

Immunogen Information

Immunogen	Fusion protein of human UNC45B
Gene Accession	BC101063
Swissprot	Q8IWX7
Synonyms	Cardiomyopathy associated 4 ,CMYA4 ,FLJ38610,MGC119540,MGC119541,UNC45 ,UNC45B

Product Information

Calculated MW	104/95 kDa
Observed MW	Refer to figures
Buffer	PBS with 0.05% NaN ₃ and 40% Glycerol,pH7.4
Purify	Antigen affinity purification
Dilution	WB 1:500-1:2000, IHC 1:50-1:300, ELISA 1:5000-1:10000

Background

This gene encodes a co-chaperone required for folding and accumulation of type II myosins. The protein consists of three tetratricopeptide repeat motifs at the N-terminus that form a complex with heat shock protein 90, a central region of unknown function that is conserved in all Unc-45 proteins, and a C-terminal Unc-45/Cro1/She4 domain. The protein is expressed at high levels in striated muscle, where its muscle myosin chaperone activity is dependent on heat shock protein 90 acting as a co-chaperone. A missense mutation in this gene has been associated with cataract development. Alternative splicing results in multiple transcript variants.

For Research Use Only

Thank you for your recent purchase.
 If you would like to learn more about antibodies, please visit www.elabscience.com.

**Focus on your research
 Service for life science**

Applications:WB-Western Blot IHC-Immunohistochemistry IF-Immunofluorescence IP-Immunoprecipitation FC-Flow cytometry ChIP-Chromatin Immunoprecipitation Reactivity: H-Human R-Rat M-Mouse Mk-Monkey Dg-Dog Ch-Chicken Hm-Hamster Rb-Rabbit Sh-Sheep Pg-Pig Z-Zebrafish X-Xenopus C-Cow.