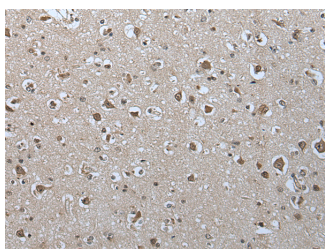


USP35 Polyclonal Antibody

| | | | |
|---------------------|---|-------------------|--------|
| Catalog No. | E-AB-52449 | Reactivity | H |
| Storage | Store at -20°C. Avoid freeze / thaw cycles. | Host | Rabbit |
| Applications | IHC,ELISA | Isotype | IgG |

Note: Centrifuge before opening to ensure complete recovery of vial contents.

Images



Immunohistochemistry of paraffin-embedded Human brain tissue using USP35 Polyclonal Antibody at dilution of 1:55(×200)

Immunogen Information

| | |
|-----------------------|---|
| Immunogen | Fusion protein of human USP35 |
| Gene Accession | BC131489 |
| Swissprot | Q9P2H5 |
| Synonyms | Deubiquitinating enzyme 35,Gm1088,Gm493,KIAA1372,USP34,USP35 |

Product Information

| | |
|-----------------|--|
| Buffer | PBS with 0.05% NaN ₃ and 40% Glycerol,pH7.4 |
| Purify | Antigen affinity purification |
| Dilution | IHC 1:40-1:200, ELISA 1:5000-1:10000 |

Background

USP35 (ubiquitin specific peptidase 35) is a 1,017 amino acid protein that belongs to the peptidase C19 family. Expressed in pancreas, testis and skeletal muscle, USP35 functions to catalyze the conversion of a ubiquitin C-terminal thioester and water to free ubiquitin and a thiol, a reaction that may play a role in signaling events throughout the cell.

For Research Use Only

Thank you for your recent purchase.

If you would like to learn more about antibodies, please visit www.elabscience.com.

**Focus on your research
Service for life science**

Applications:WB-Western Blot IHC-Immunohistochemistry IF-Immunofluorescence IP-Immunoprecipitation FC-Flow cytometry ChIP-Chromatin Immunoprecipitation Reactivity: H-Human R-Rat M-Mouse Mk-Monkey Dg-Dog Ch-Chicken Hm-Hamster Rb-Rabbit Sh-Sheep Pg-Pig Z-Zebrafish X-Xenopus C-Cow.