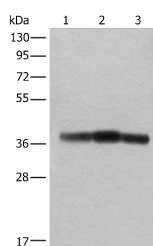


ATAD1 Polyclonal Antibody

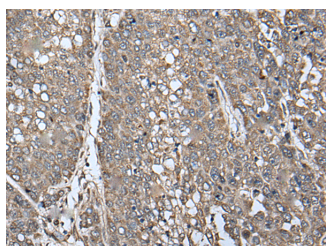
Catalog No.	E-AB-52454	Reactivity	H,M,R
Storage	Store at -20°C. Avoid freeze / thaw cycles.	Host	Rabbit
Applications	WB,IHC,ELISA	Isotype	IgG

Note: Centrifuge before opening to ensure complete recovery of vial contents.

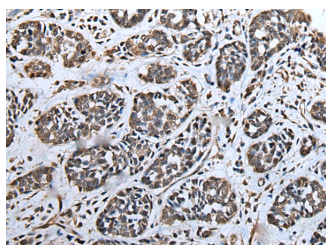
Images



Western blot analysis of Rat brain tissue Mouse brain tissue and Human cerebrum tissue lysates using ATAD1 Polyclonal Antibody at dilution of 1:800



Immunohistochemistry of paraffin-embedded Human liver cancer tissue using ATAD1 Polyclonal Antibody at dilution of 1:65(×200)



Immunohistochemistry of paraffin-embedded Human esophagus cancer tissue using ATAD1 Polyclonal Antibody at dilution of 1:65(×200)

Immunogen Information

Immunogen	Fusion protein of human ATAD1
Gene Accession	BC010868
Swissprot	Q8NBU5
Synonyms	4921525H23Rik,AAA+ ATPase Thorase,Ab2-088,AFDC1,Atad1,ATPase family AAA domain containing protein 1,ATPase Thorase,AW107648,FLJ14600,FNP001,Thorase

Product Information

Calculated MW	41 kDa
Observed MW	Refer to figures
Buffer	PBS with 0.05% NaN ₃ and 40% Glycerol,pH7.4
Purify	Antigen affinity purification
Dilution	WB 1:500-1:2000, IHC 1:50-1:300, ELISA 1:5000-1:10000

Background

ATAD1 (ATPase Family AAA Domain Containing 1) is a Protein Coding gene. Diseases associated with ATAD1 include Hyperekplexia 4 and Hyperekplexia. Gene Ontology (GO) annotations related to this gene include ATPase activity and microtubule-severing ATPase activity. An important paralog of this gene is SPAST.

For Research Use Only

Thank you for your recent purchase.
 If you would like to learn more about antibodies, please visit www.elabscience.com.

**Focus on your research
 Service for life science**

Applications:WB-Western Blot IHC-Immunohistochemistry IF-Immunofluorescence IP-Immunoprecipitation FC-Flow cytometry ChIP-Chromatin Immunoprecipitation Reactivity: H-Human R-Rat M-Mouse Mk-Monkey Dg-Dog Ch-Chicken Hm-Hamster Rb-Rabbit Sh-Sheep Pg-Pig Z-Zebrafish X-Xenopus C-Cow.