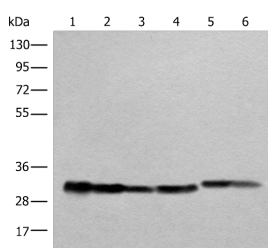


ATP5C1 Polyclonal Antibody

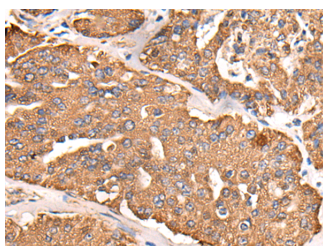
Catalog No.	E-AB-52459	Reactivity	H,M,R
Storage	Store at -20°C. Avoid freeze / thaw cycles.	Host	Rabbit
Applications	WB,IHC,ELISA	Isotype	IgG

Note: Centrifuge before opening to ensure complete recovery of vial contents.

Images



Western blot analysis of Human heart tissue A549 231 Jurkat HEPG2 and Hela cell lysates using ATP5C1 Polyclonal Antibody at dilution of 1:1000



Immunohistochemistry of paraffin-embedded Human liver cancer tissue using ATP5C1 Polyclonal Antibody at dilution of 1:55(×200)

Immunogen Information

Immunogen	Fusion protein of human ATP5C1
Gene Accession	BC000470
Swissprot	P36542
Synonyms	ATP5C 1,ATP5C,ATP5C1,ATP5CL1,ATPG,F ATPase gamma subunit,F-ATPase gamma subunit,mitochondrial,Mitochondrial ATP synthase,gamma subunit 1

Product Information

Calculated MW	33 kDa
Observed MW	Refer to figures
Buffer	PBS with 0.05% NaN ₃ and 40% Glycerol,pH7.4
Purify	Antigen affinity purification
Dilution	WB 1:1000-1:5000, IHC 1:40-1:200, ELISA 1:5000-1:10000

Background

ATP5C1(ATP synthase subunit gamma,mitochondrial) is also named as ATP5C,ATP5CL1 and belongs to the ATPase gamma chain family. Some scientists reported the complete sequence of the gene for the human ATP synthase gamma subunit and described tissue-specific isoforms of the subunit generated by alternative splicing of exon 9. The liver (L) isoform differed from the heart (H) isoform by the addition of a single amino acid (asp273) at the C terminus. .

For Research Use Only

Thank you for your recent purchase.
 If you would like to learn more about antibodies,please visit www.elabscience.com.

**Focus on your research
 Service for life science**

Applications:WB-Western Blot IHC-Immunohistochemistry IF-Immunofluorescence IP-Immunoprecipitation FC-Flow cytometry ChIP-Chromatin Immunoprecipitation Reactivity: H-Human R-Rat M-Mouse Mk-Monkey Dg-Dog Ch-Chicken Hm-Hamster Rb-Rabbit Sh-Sheep Pg-Pig Z-Zebrafish X-Xenopus C-Cow.