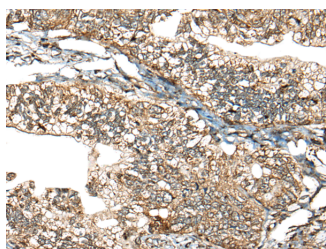


CALHM1 Polyclonal Antibody

| | | | |
|---------------------|---------------------------------------------|-------------------|--------|
| Catalog No. | E-AB-52511 | Reactivity | H,M |
| Storage | Store at -20°C. Avoid freeze / thaw cycles. | Host | Rabbit |
| Applications | IHC,ELISA | Isotype | IgG |

Note: Centrifuge before opening to ensure complete recovery of vial contents.

Images



Immunohistochemistry of paraffin-embedded Human gastric cancer tissue using CALHM1 Polyclonal Antibody at dilution of 1:40(×200)

Immunogen Information

| | |
|-----------------------|------------------------------------------------------------------------------------------------------------|
| Immunogen | Fusion protein of human CALHM1 |
| Gene Accession | BC036193 |
| Swissprot | Q8IU99 |
| Synonyms | CAHM1,Calcium homeostasis modulator 1,Calcium homeostasis modulator protein 1,CALHM1,FAM26C,Protein FAM26C |

Product Information

| | |
|-----------------|--------------------------------------------------------|
| Buffer | PBS with 0.05% NaN ₃ and 40% Glycerol,pH7.4 |
| Purify | Antigen affinity purification |
| Dilution | IHC 1:30-1:150, ELISA 1:5000-1:10000 |

Background

CALHM1 (Calcium Homeostasis Modulator 1) is a Protein Coding gene. Diseases associated with CALHM1 include Alzheimer Disease. Among its related pathways are Taste transduction. GO annotations related to this gene include identical protein binding and voltage-gated ion channel activity. An important paralog of this gene is CALHM3. This gene encodes a calcium channel that plays a role in processing of amyloid-beta precursor protein. A polymorphism at this locus has been reported to be associated with susceptibility to late-onset Alzheimer's disease in some populations, but the pathogenicity of this polymorphism is unclear.

For Research Use Only

Thank you for your recent purchase.
 If you would like to learn more about antibodies, please visit www.elabscience.com.

**Focus on your research
 Service for life science**

Applications:WB-Western Blot IHC-Immunohistochemistry IF-Immunofluorescence IP-Immunoprecipitation FC-Flow cytometry ChIP-Chromatin Immunoprecipitation Reactivity: H-Human R-Rat M-Mouse Mk-Monkey Dg-Dog Ch-Chicken Hm-Hamster Rb-Rabbit Sh-Sheep Pg-Pig Z-Zebrafish X-Xenopus C-Cow.