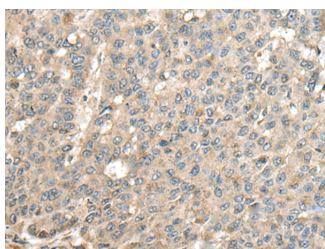


CASQ1 Polyclonal Antibody

Catalog No.	E-AB-52513	Reactivity	H,M,R
Storage	Store at -20°C. Avoid freeze / thaw cycles.	Host	Rabbit
Applications	IHC,ELISA	Isotype	IgG

Note: Centrifuge before opening to ensure complete recovery of vial contents.

Images



Immunohistochemistry of paraffin-embedded Human liver cancer tissue using CASQ1 Polyclonal Antibody at dilution of 1:100(×200)

Immunogen Information

Immunogen	Fusion protein of human CASQ1
Gene Accession	BC022289
Swissprot	P31415
Synonyms	Calmitin,Calsequestrin-1,CASQ,Casq1,CASQ1,PDIB1,skeletal muscle isoform

Product Information

Buffer	PBS with 0.05% NaN ₃ and 40% Glycerol,pH7.4
Purify	Antigen affinity purification
Dilution	IHC 1:50-1:300, ELISA 1:5000-1:10000

Background

This gene encodes the skeletal muscle specific member of the calsequestrin protein family. Calsequestrin functions as a luminal sarcoplasmic reticulum calcium sensor in both cardiac and skeletal muscle cells. This protein, also known as calmitine, functions as a calcium regulator in the mitochondria of skeletal muscle. This protein is absent in patients with Duchenne and Becker types of muscular dystrophy.

For Research Use Only

Thank you for your recent purchase.

If you would like to learn more about antibodies, please visit www.elabscience.com.

**Focus on your research
 Service for life science**

Applications:WB-Western Blot IHC-Immunohistochemistry IF-Immunofluorescence IP-Immunoprecipitation FC-Flow cytometry ChIP-Chromatin Immunoprecipitation Reactivity: H-Human R-Rat M-Mouse Mk-Monkey Dg-Dog Ch-Chicken Hm-Hamster Rb-Rabbit Sh-Sheep Pg-Pig Z-Zebrafish X-Xenopus C-Cow.