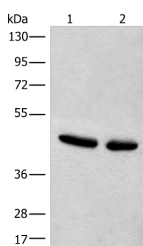


CANT1 Polyclonal Antibody

Catalog No.	E-AB-52515	Reactivity	H,M,R
Storage	Store at -20°C. Avoid freeze / thaw cycles.	Host	Rabbit
Applications	WB,ELISA	Isotype	IgG

Note: Centrifuge before opening to ensure complete recovery of vial contents.

Images



Western blot analysis of HeLa and A375 cell lysates using CANT1 Polyclonal Antibody at dilution of 1:500

Immunogen Information

Immunogen	Fusion protein of human CANT1
Gene Accession	BC017655
Swissprot	Q8WVQ1
Synonyms	Apyrase, Apyrase homolog, Soluble calcium-activated nucleotidase 1

Product Information

Calculated MW	45 kDa
Observed MW	Refer to figures
Buffer	PBS with 0.05% NaN ₃ and 40% Glycerol, pH7.4
Purify	Antigen affinity purification
Dilution	WB 1:500-1:2000, ELISA 1:5000-1:10000

Background

This protein encoded by this gene belongs to the apyrase family. It functions as a calcium-dependent nucleotidase with a preference for UDP. Mutations in this gene are associated with Desbuquois dysplasia with hand anomalies. Alternatively spliced transcript variants have been noted for this gene.

For Research Use Only

Thank you for your recent purchase.
 If you would like to learn more about antibodies, please visit www.elabscience.com.

**Focus on your research
 Service for life science**

Applications: WB-Western Blot IHC-Immunohistochemistry IF-Immunofluorescence IP-Immunoprecipitation FC-Flow cytometry ChIP-Chromatin Immunoprecipitation Reactivity: H-Human R-Rat M-Mouse Mk-Monkey Dg-Dog Ch-Chicken Hm-Hamster Rb-Rabbit Sh-Sheep Pg-Pig Z-Zebrafish X-Xenopus C-Cow.