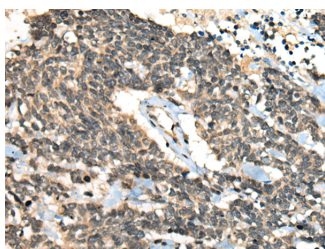


CCNB1IP1 Polyclonal Antibody

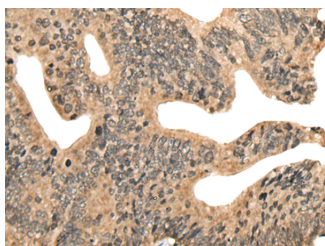
Catalog No.	E-AB-52525	Reactivity	H,M
Storage	Store at -20°C. Avoid freeze / thaw cycles.	Host	Rabbit
Applications	IHC,ELISA	Isotype	IgG

Note: Centrifuge before opening to ensure complete recovery of vial contents.

Images



Immunohistochemistry of paraffin-embedded Human lung cancer tissue using CCNB1IP1 Polyclonal Antibody at dilution of 1:30(×200)



Immunohistochemistry of paraffin-embedded Human colorectal cancer tissue using CCNB1IP1 Polyclonal Antibody at dilution of 1:30(×200)

Immunogen Information

Immunogen	Full length fusion protein
Gene Accession	BC000369
Swissprot	Q9NPC3
Synonyms	C14orf18,CCNB1IP1,Gm288,HEI10,Human enhancer of invasion 10,mei4

Product Information

Buffer	PBS with 0.05% NaN3 and 40% Glycerol,pH7.4
Purify	Antigen affinity purification
Dilution	IHC 1:30-1:150, ELISA 1:5000-1:10000

Background

HEI10 is a member of the E3 ubiquitin ligase family and functions in progression of the cell cycle through G(2)/M.

For Research Use Only

Thank you for your recent purchase.
 If you would like to learn more about antibodies, please visit www.elabscience.com.

**Focus on your research
 Service for life science**

Applications:WB-Western Blot IHC-Immunohistochemistry IF-Immunofluorescence IP-Immunoprecipitation FC-Flow cytometry ChIP-Chromatin Immunoprecipitation Reactivity: H-Human R-Rat M-Mouse Mk-Monkey Dg-Dog Ch-Chicken Hm-Hamster Rb-Rabbit Sh-Sheep Pg-Pig Z-Zebrafish X-Xenopus C-Cow.