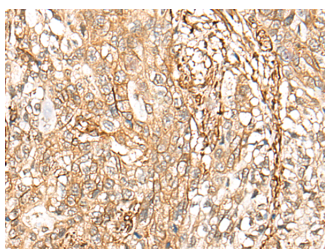


## CD99 Polyclonal Antibody

<b>Catalog No.</b>	E-AB-52527	<b>Reactivity</b>	H
<b>Storage</b>	Store at -20°C. Avoid freeze / thaw cycles.	<b>Host</b>	Rabbit
<b>Applications</b>	IHC,ELISA	<b>Isotype</b>	IgG

**Note:** Centrifuge before opening to ensure complete recovery of vial contents.

### Images



Immunohistochemistry of paraffin-embedded Human gastric cancer tissue using CD99 Polyclonal Antibody at dilution of 1:40(×200)

### Immunogen Information

<b>Immunogen</b>	Fusion protein of human CD99
<b>Gene Accession</b>	BC002584
<b>Swissprot</b>	P14209
<b>Synonyms</b>	12E7, Antigen identified by monoclonal 12E7, T-cell surface glycoprotein E2

### Product Information

<b>Buffer</b>	PBS with 0.05% NaN <sub>3</sub> and 40% Glycerol, pH7.4
<b>Purify</b>	Antigen affinity purification
<b>Dilution</b>	IHC 1:40-1:200, ELISA 1:5000-1:10000

### Background

CD99, also known as MIC2, is a heavily O-glycosylated transmembrane protein involved in T-cell adhesion processes and in spontaneous rosette formation with erythrocytes. CD99 is broadly distributed on many cell types, with particularly strong expression on human cortical thymocytes, Ewing's sarcoma cells and peripheral primitive neuroectodermal tumors. In normal cells, CD99 has been functionally implicated in cell adhesion, migration, apoptosis, differentiation, activation, and proliferation of lymphocytes and monocyte extravasation and transport of several transmembrane proteins. CD99 displays two surface isoforms generated by alternative splicing: a long 32 kDa and a short 28 kDa form.

#### For Research Use Only

Thank you for your recent purchase.  
 If you would like to learn more about antibodies, please visit [www.elabscience.com](http://www.elabscience.com).

**Focus on your research  
 Service for life science**

Applications: WB-Western Blot IHC-Immunohistochemistry IF-Immunofluorescence IP-Immunoprecipitation FC-Flow cytometry ChIP-Chromatin Immunoprecipitation Reactivity: H-Human R-Rat M-Mouse Mk-Monkey Dg-Dog Ch-Chicken Hm-Hamster Rb-Rabbit Sh-Sheep Pg-Pig Z-Zebrafish X-Xenopus C-Cow.