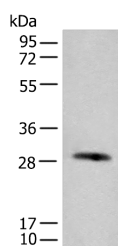


CFHR2 Polyclonal Antibody

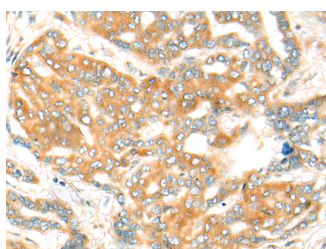
Catalog No.	E-AB-52540	Reactivity	H
Storage	Store at -20°C. Avoid freeze / thaw cycles.	Host	Rabbit
Applications	WB,IHC,ELISA	Isotype	IgG

Note: Centrifuge before opening to ensure complete recovery of vial contents.

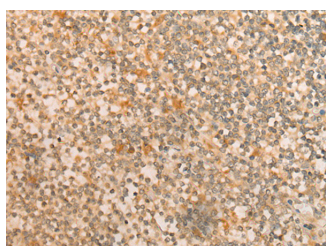
Images



Western blot analysis of Human urinary bladder tissue lysate using CFHR2 Polyclonal Antibody at dilution of 1:550



Immunohistochemistry of paraffin-embedded Human liver cancer tissue using CFHR2 Polyclonal Antibody at dilution of 1:35(x200)



Immunohistochemistry of paraffin-embedded Human tonsil tissue using CFHR2 Polyclonal Antibody at dilution of 1:35(x200)

Immunogen Information

Immunogen	Fusion protein of human CFHR2
Gene Accession	BC022283
Swissprot	P36980
Synonyms	CFHL2,CFHR2,Complement factor H related protein 2,HFL3

Product Information

Calculated MW	31 kDa
Observed MW	Refer to figures
Buffer	PBS with 0.05% NaN ₃ and 40% Glycerol,pH7.4
Purify	Antigen affinity purification
Dilution	WB 1:500-1:2000, IHC 1:30-1:150, ELISA 1:5000-1:10000

Background

This gene belongs to a family of complement factor H-related genes (CFHR), which are clustered together with complement factor H gene on chromosome 1, and are involved in regulation of complement. Mutations in CFHR genes have been associated with dense deposit disease and atypical haemolytic-uraemic syndrome. Alternatively spliced transcript variants have been found for this gene.

For Research Use Only

Thank you for your recent purchase.
 If you would like to learn more about antibodies, please visit www.elabscience.com.

Focus on your research
Service for life science

Applications:WB-Western Blot IHC-Immunohistochemistry IF-Immunofluorescence IP-Immunoprecipitation FC-Flow cytometry ChIP-Chromatin Immunoprecipitation Reactivity: H-Human R-Rat M-Mouse Mk-Monkey Dg-Dog Ch-Chicken Hm-Hamster Rb-Rabbit Sh-Sheep Pg-Pig Z-Zebrafish X-Xenopus C-Cow.