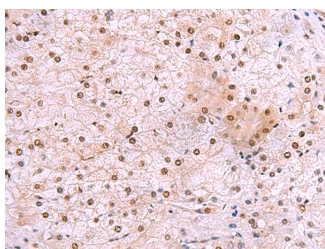


DDI2 Polyclonal Antibody

Catalog No.	E-AB-52572	Reactivity	H,M
Storage	Store at -20°C. Avoid freeze / thaw cycles.	Host	Rabbit
Applications	IHC,ELISA	Isotype	IgG

Note: Centrifuge before opening to ensure complete recovery of vial contents.

Images



Immunohistochemistry of paraffin-embedded Human liver cancer tissue using DDI2 Polyclonal Antibody at dilution of 1:50(×200)

Immunogen Information

Immunogen	Fusion protein of human DDI2
Gene Accession	BC006011
Swissprot	Q5TDH0
Synonyms	DDI1 DNA damage inducible 1 homolog 2,MGC14844,Protein DDI1 homolog 2,RP4-680D5.5

Product Information

Buffer	PBS with 0.05% NaN ₃ and 40% Glycerol,pH7.4
Purify	Antigen affinity purification
Dilution	IHC 1:50-1:300, ELISA 1:5000-1:10000

Background

DDI1 and DDI2 are ubiquitin receptor homologs of the *Saccharomyces cerevisiae* ddi1 protein, which is involved in regulation of the cell cycle and the late secretory pathway. DDI2 is a 399 amino acid protein that contains one ubiquitin-like domain and exists as three isoforms as a result of alternative splicing. The gene encoding DDI2 maps to human chromosome 1, the largest human chromosome which spans about 260 million base pairs and makes up 8% of the human genome. Other notable genes located on chromosome 1 include LMNA, which is associated with the rare aging disease Hutchinson-Gilford progeria, and the MUTYH gene, which is partially responsible for familial adenomatous polyposis. Stickler syndrome, Parkinsons, Gaucher disease and Usher syndrome.

For Research Use Only

Thank you for your recent purchase.
 If you would like to learn more about antibodies, please visit www.elabscience.com.

**Focus on your research
 Service for life science**

Applications:WB-Western Blot IHC-Immunohistochemistry IF-Immunofluorescence IP-Immunoprecipitation FC-Flow cytometry ChIP-Chromatin Immunoprecipitation Reactivity: H-Human R-Rat M-Mouse Mk-Monkey Dg-Dog Ch-Chicken Hm-Hamster Rb-Rabbit Sh-Sheep Pg-Pig Z-Zebrafish X-Xenopus C-Cow.