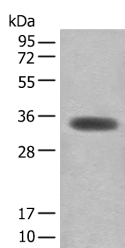


## MYOZ2 Polyclonal Antibody

<b>Catalog No.</b>	E-AB-52584	<b>Reactivity</b>	H,M
<b>Storage</b>	Store at -20°C. Avoid freeze / thaw cycles.	<b>Host</b>	Rabbit
<b>Applications</b>	WB,ELISA	<b>Isotype</b>	IgG

**Note:** Centrifuge before opening to ensure complete recovery of vial contents.

### Images



Western blot analysis of Mouse skeletal muscle tissue lysate using MYOZ2 Polyclonal Antibody at dilution of 1:450

### Immunogen Information

<b>Immunogen</b>	Full length fusion protein
<b>Gene Accession</b>	BC017402
<b>Swissprot</b>	Q9NPC6
<b>Synonyms</b>	C4orf5,Calsarcin1,CMH16,CS 1,CS1,FATZ related protein 2,MYOZ2,Myozenin-2,Myozenin2

### Product Information

<b>Calculated MW</b>	30 kDa
<b>Observed MW</b>	Refer to figures
<b>Buffer</b>	PBS with 0.05% NaN <sub>3</sub> and 40% Glycerol,pH7.4
<b>Purify</b>	Antigen affinity purification
<b>Dilution</b>	WB 1:500-1:2000, ELISA 1:5000-1:10000

### Background

MYOZ2 (Myozenin 2) is a Protein Coding gene. Diseases associated with MYOZ2 include Cardiomyopathy, Hypertrophic, 16 and Myoz2-Related Familial Hypertrophic Cardiomyopathy. GO annotations related to this gene include actin binding and telethonin binding. An important paralog of this gene is MYOZ1. The protein encoded by this gene belongs to a family of sarcomeric proteins that bind to calcineurin, a phosphatase involved in calcium-dependent signal transduction in diverse cell types. These family members tether calcineurin to alpha-actinin at the z-line of the sarcomere of cardiac and skeletal muscle cells, and thus they are important for calcineurin signaling. Mutations in this gene cause cardiomyopathy familial hypertrophic type 16, a hereditary heart disorder.

#### For Research Use Only

Thank you for your recent purchase.

If you would like to learn more about antibodies, please visit [www.elabscience.com](http://www.elabscience.com).

**Focus on your research  
 Service for life science**

Applications:WB-Western Blot IHC-Immunohistochemistry IF-Immunofluorescence IP-Immunoprecipitation FC-Flow cytometry ChIP-Chromatin Immunoprecipitation Reactivity: H-Human R-Rat M-Mouse Mk-Monkey Dg-Dog Ch-Chicken Hm-Hamster Rb-Rabbit Sh-Sheep Pg-Pig Z-Zebrafish X-Xenopus C-Cow.