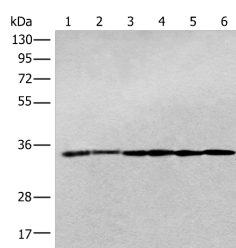


PITPNB Polyclonal Antibody

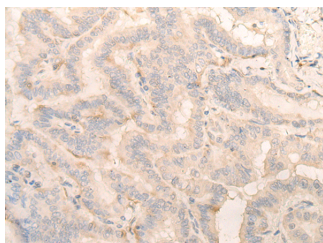
Catalog No.	E-AB-52589	Reactivity	H,M,R
Storage	Store at -20°C. Avoid freeze / thaw cycles.	Host	Rabbit
Applications	WB,IHC,ELISA	Isotype	IgG

Note: Centrifuge before opening to ensure complete recovery of vial contents.

Images



Western blot analysis of Jurkat cell
 Human breast cancer tissue Hela cell
 Human fetal brain tissue Human
 cerebrum tissue Rat brain tissue
 lysates using PITPNB Polyclonal
 Antibody at dilution of 1:400



Immunohistochemistry of paraffin-
 embedded Human thyroid cancer
 tissue using PITPNB Polyclonal
 Antibody at dilution of 1:25(×200)

Immunogen Information

Immunogen	Fusion protein of human PITPNB
Gene Accession	BC018704
Swissprot	P48739
Synonyms	PI-TP-beta, PIPNB, Pitpnb, PtdIns transfer protein beta, PtdInsTP, PtdInsTP beta, VIB1B

Product Information

Calculated MW	32 kDa
Observed MW	Refer to figures
Buffer	PBS with 0.05% NaN ₃ and 40% Glycerol, pH7.4
Purify	Antigen affinity purification
Dilution	WB 1:500-1:2000, IHC 1:30-1:150, ELISA 1:5000-1:10000

Background

This gene encodes a cytoplasmic protein that catalyzes the transfer of phosphatidylinositol and phosphatidylcholine between membranes. This transfer activity is required for COPI complex-mediated retrograde transport from the Golgi apparatus to the endoplasmic reticulum. Alternative splicing of this gene results in multiple transcript variants.

For Research Use Only

Thank you for your recent purchase.
 If you would like to learn more about antibodies, please visit www.elabscience.com.

**Focus on your research
 Service for life science**

Applications: WB-Western Blot IHC-Immunohistochemistry IF-Immunofluorescence IP-Immunoprecipitation FC-Flow cytometry ChIP-Chromatin Immunoprecipitation Reactivity: H-Human R-Rat M-Mouse Mk-Monkey Dg-Dog Ch-Chicken Hm-Hamster Rb-Rabbit Sh-Sheep Pg-Pig Z-Zebrafish X-Xenopus C-Cow.