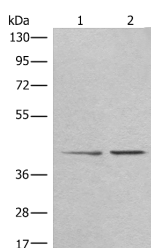


TMEM248 Polyclonal Antibody

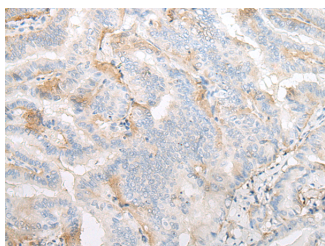
Catalog No.	E-AB-52601	Reactivity	H,M,R
Storage	Store at -20°C. Avoid freeze / thaw cycles.	Host	Rabbit
Applications	WB,IHC,ELISA	Isotype	IgG

Note: Centrifuge before opening to ensure complete recovery of vial contents.

Images



Western blot analysis of A172 and HEPG2 cell lysates using TMEM248 Polyclonal Antibody at dilution of 1:300



Immunohistochemistry of paraffin-embedded Human thyroid cancer tissue using TMEM248 Polyclonal Antibody at dilution of 1:25(×200)

Immunogen Information

Immunogen	Fusion protein of human TMEM248
Gene Accession	BC008675
Swissprot	Q9NWD8
Synonyms	C7orf42,CG042,Chromosome 7 open reading frame 42,FLJ10099,FLJ13090,Hypothetical protein LOC55069,UPF0458 protein C7orf42

Product Information

Calculated MW	35 kDa
Observed MW	Refer to figures
Buffer	PBS with 0.05% NaN ₃ and 40% Glycerol,pH7.4
Purify	Antigen affinity purification
Dilution	WB 1:500-1:2000, IHC 1:25-1:100, ELISA 1:5000-1:10000

Background

The function of this protein remains unknown.

For Research Use Only

Thank you for your recent purchase.
 If you would like to learn more about antibodies, please visit www.elabscience.com.

**Focus on your research
 Service for life science**

Applications:WB-Western Blot IHC-Immunohistochemistry IF-Immunofluorescence IP-Immunoprecipitation FC-Flow cytometry ChIP-Chromatin Immunoprecipitation Reactivity: H-Human R-Rat M-Mouse Mk-Monkey Dg-Dog Ch-Chicken Hm-Hamster Rb-Rabbit Sh-Sheep Pg-Pig Z-Zebrafish X-Xenopus C-Cow.