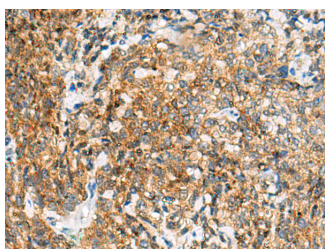


## TUFT1 Polyclonal Antibody

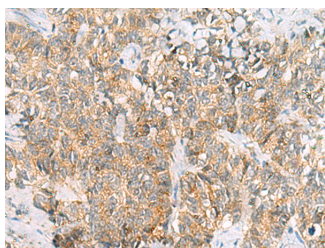
<b>Catalog No.</b>	E-AB-52622	<b>Reactivity</b>	H,M
<b>Storage</b>	Store at -20°C. Avoid freeze / thaw cycles.	<b>Host</b>	Rabbit
<b>Applications</b>	IHC,ELISA	<b>Isotype</b>	IgG

**Note:** Centrifuge before opening to ensure complete recovery of vial contents.

### Images



Immunohistochemistry of paraffin-embedded Human cervical cancer tissue using TUFT1 Polyclonal Antibody at dilution of 1:120(×200)



Immunohistochemistry of paraffin-embedded Human ovarian cancer tissue using TUFT1 Polyclonal Antibody at dilution of 1:120(×200)

### Immunogen Information

<b>Immunogen</b>	Fusion protein of human TUFT1
<b>Gene Accession</b>	BC008301
<b>Swissprot</b>	Q9NNX1
<b>Synonyms</b>	MGC188530,TUFT1,TUFT1,Tuftelin 1,Tuftelin

### Product Information

<b>Buffer</b>	PBS with 0.05% NaN <sub>3</sub> and 40% Glycerol,pH7.4
<b>Purify</b>	Antigen affinity purification
<b>Dilution</b>	IHC 1:100-1:300, ELISA 1:5000-1:10000

### Background

Tuftelin is an acidic protein that is thought to play a role in dental enamel mineralization and is implicated in caries susceptibility. It is also thought to be involved with adaptation to hypoxia, mesenchymal stem cell function, and neurotrophin nerve growth factor mediated neuronal differentiation.

#### For Research Use Only

Thank you for your recent purchase.  
 If you would like to learn more about antibodies, please visit [www.elabscience.com](http://www.elabscience.com).

**Focus on your research  
 Service for life science**

Applications:WB-Western Blot IHC-Immunohistochemistry IF-Immunofluorescence IP-Immunoprecipitation FC-Flow cytometry ChIP-Chromatin Immunoprecipitation Reactivity: H-Human R-Rat M-Mouse Mk-Monkey Dg-Dog Ch-Chicken Hm-Hamster Rb-Rabbit Sh-Sheep Pg-Pig Z-Zebrafish X-Xenopus C-Cow.