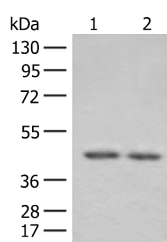


## ILKAP Polyclonal Antibody

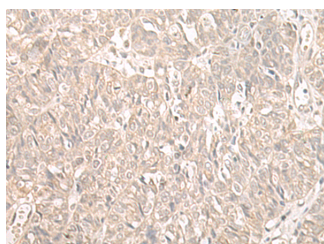
<b>Catalog No.</b>	E-AB-52624	<b>Reactivity</b>	H,M,R
<b>Storage</b>	Store at -20°C. Avoid freeze / thaw cycles.	<b>Host</b>	Rabbit
<b>Applications</b>	WB,IHC,ELISA	<b>Isotype</b>	IgG

**Note:** Centrifuge before opening to ensure complete recovery of vial contents.

### Images



Western blot analysis of 293T cell lysates using ILKAP Polyclonal Antibody at dilution of 1:800



Immunohistochemistry of paraffin-embedded Human ovarian cancer tissue using ILKAP Polyclonal Antibody at dilution of 1:55(x200)

### Immunogen Information

<b>Immunogen</b>	Fusion protein of human ILKAP
<b>Gene Accession</b>	BC006576
<b>Swissprot</b>	Q9H0C8
<b>Synonyms</b>	FLJ10181,ILKAP,ILKAP2,ILKAP3,MGC4846,PP2C DELTA,Protein phosphatase 2c delta isozyme

### Product Information

<b>Calculated MW</b>	43 kDa
<b>Observed MW</b>	Refer to figures
<b>Buffer</b>	PBS with 0.05% NaN <sub>3</sub> and 40% Glycerol,pH7.4
<b>Purify</b>	Antigen affinity purification
<b>Dilution</b>	WB 1:500-1:2000, IHC 1:50-1:300, ELISA 1:5000-1:10000

### Background

The protein encoded by this gene is a protein serine/threonine phosphatase of the PP2C family. This protein can interact with integrin-linked kinase (ILK/ILK1), a regulator of integrin mediated signaling, and regulate the kinase activity of ILK. Through the interaction with ILK, this protein may selectively affect the signaling process of ILK-mediated glycogen synthase kinase 3 beta (GSK3beta), and thus participate in Wnt signaling pathway. ILKAP (ILK Associated Serine/Threonine Phosphatase) is a Protein Coding gene. Among its related pathways are AKT Signaling Pathway. GO annotations related to this gene include protein serine/threonine phosphatase activity. An important paralog of this gene is PPM1F.

#### For Research Use Only

Thank you for your recent purchase.  
 If you would like to learn more about antibodies, please visit [www.elabscience.com](http://www.elabscience.com).

**Focus on your research  
 Service for life science**

Applications:WB-Western Blot IHC-Immunohistochemistry IF-Immunofluorescence IP-Immunoprecipitation FC-Flow cytometry ChIP-Chromatin Immunoprecipitation Reactivity: H-Human R-Rat M-Mouse Mk-Monkey Dg-Dog Ch-Chicken Hm-Hamster Rb-Rabbit Sh-Sheep Pg-Pig Z-Zebrafish X-Xenopus C-Cow.