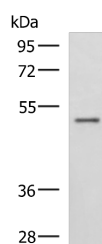


GRWD1 Polyclonal Antibody

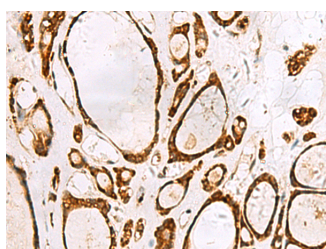
Catalog No.	E-AB-52637	Reactivity	H,M,R
Storage	Store at -20°C. Avoid freeze / thaw cycles.	Host	Rabbit
Applications	WB,IHC,ELISA	Isotype	IgG

Note: Centrifuge before opening to ensure complete recovery of vial contents.

Images



Western blot analysis of Human placenta tissue lysate using GRWD1 Polyclonal Antibody at dilution of 1:800



Immunohistochemistry of paraffin-embedded Human thyroid cancer tissue using GRWD1 Polyclonal Antibody at dilution of 1:55(x200)

Immunogen Information

Immunogen	Fusion protein of human GRWD1
Gene Accession	BC002440
Swissprot	Q9BQ67
Synonyms	CDW4,GRWD 1,GRWD,grwd1,GRWD1,KIAA1942, METTL18,RRB1,WD repeat domain 28,WDR 28,WDR28

Product Information

Calculated MW	49 kDa
Observed MW	Refer to figures
Buffer	PBS with 0.05% NaN ₃ and 40% Glycerol,pH7.4
Purify	Antigen affinity purification
Dilution	WB 1:500-1:2000, IHC 1:50-1:200, ELISA 1:5000-1:10000

Background

This gene encodes a glutamate-rich protein that contains five WD-repeat motifs. The encoded protein may play a critical role in ribosome biogenesis and may also play a role in histone methylation through interactions with CUL4-DDB1 ubiquitin E3 ligase.

For Research Use Only

Thank you for your recent purchase.
 If you would like to learn more about antibodies, please visit www.elabscience.com.

**Focus on your research
 Service for life science**

Applications:WB-Western Blot IHC-Immunohistochemistry IF-Immunofluorescence IP-Immunoprecipitation FC-Flow cytometry ChIP-Chromatin Immunoprecipitation Reactivity: H-Human R-Rat M-Mouse Mk-Monkey Dg-Dog Ch-Chicken Hm-Hamster Rb-Rabbit Sh-Sheep Pg-Pig Z-Zebrafish X-Xenopus C-Cow.