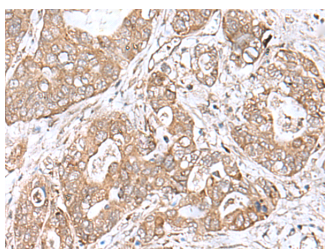


TEAD2 Polyclonal Antibody

Catalog No.	E-AB-52638	Reactivity	H,M
Storage	Store at -20°C. Avoid freeze / thaw cycles.	Host	Rabbit
Applications	IHC,ELISA	Isotype	IgG

Note: Centrifuge before opening to ensure complete recovery of vial contents.

Images



Immunohistochemistry of paraffin-embedded Human gastric cancer tissue using TEAD2 Polyclonal Antibody at dilution of 1:60(×200)

Immunogen Information

Immunogen	Fusion protein of human TEAD2
Gene Accession	BC007556
Swissprot	Q15562
Synonyms	Etdf,ETEF 1,ETF,TEA domain family member 2,Transcriptional enhancer factor TEF-4

Product Information

Buffer	PBS with 0.05% NaN ₃ and 40% Glycerol,pH7.4
Purify	Antigen affinity purification
Dilution	IHC 1:40-1:200, ELISA 1:5000-1:10000

Background

TEAD2 (TEA Domain Transcription Factor 2) is a Protein Coding gene. Among its related pathways are Mesodermal Commitment Pathway and Gene Expression. Gene Ontology (GO) annotations related to this gene include DNA binding transcription factor activity and transcription factor activity, RNA polymerase II distal enhancer sequence-specific binding. An important paralog of this gene is TEAD1.

For Research Use Only

Thank you for your recent purchase.
 If you would like to learn more about antibodies, please visit www.elabscience.com.

**Focus on your research
 Service for life science**

Applications:WB-Western Blot IHC-Immunohistochemistry IF-Immunofluorescence IP-Immunoprecipitation FC-Flow cytometry ChIP-Chromatin Immunoprecipitation Reactivity: H-Human R-Rat M-Mouse Mk-Monkey Dg-Dog Ch-Chicken Hm-Hamster Rb-Rabbit Sh-Sheep Pg-Pig Z-Zebrafish X-Xenopus C-Cow.