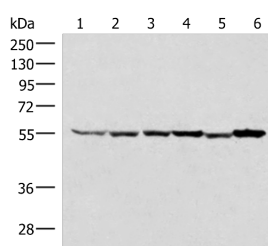


RUVBL1 Polyclonal Antibody

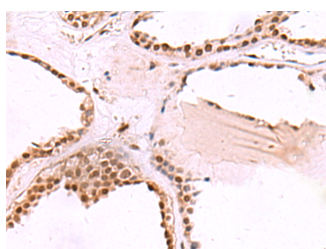
Catalog No.	E-AB-52642	Reactivity	H,M,R
Storage	Store at -20°C. Avoid freeze / thaw cycles.	Host	Rabbit
Applications	WB,IHC,ELISA	Isotype	IgG

Note: Centrifuge before opening to ensure complete recovery of vial contents.

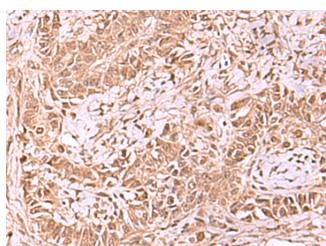
Images



Western blot analysis of 293T HepG2 K562 HT29 A549 and Raji cell lysates using RUVBL1 Polyclonal Antibody at dilution of 1:2000



Immunohistochemistry of paraffin-embedded Human thyroid cancer tissue using RUVBL1 Polyclonal Antibody at dilution of 1:65(×200)



Immunohistochemistry of paraffin-embedded Human ovarian cancer tissue using RUVBL1 Polyclonal Antibody at dilution of 1:65(×200)

Immunogen Information

Immunogen	Fusion protein of human RUVBL1
Gene Accession	BC002993
Swissprot	Q9Y265
Synonyms	RuvB-like 1,RUVB1,RUVBL1,RVBL1,TAP54 alpha ,TAP54-alpha,TIP49,TIP49a

Product Information

Calculated MW	50 kDa
Observed MW	Refer to figures
Buffer	PBS with 0.05% NaN ₃ and 40% Glycerol,pH7.4
Purify	Antigen affinity purification
Dilution	WB 1:1000-1:5000, IHC 1:50-1:300, ELISA 1:5000-1:10000

Background

This gene encodes a protein that has both DNA-dependent ATPase and DNA helicase activities and belongs to the ATPases associated with diverse cellular activities (AAA+) protein family. The encoded protein associates with several multisubunit transcriptional complexes and with protein complexes involved in both ATP-dependent remodeling and histone modification. Alternate splicing results in multiple transcript variants.

For Research Use Only

Thank you for your recent purchase.
 If you would like to learn more about antibodies, please visit www.elabscience.com.

**Focus on your research
 Service for life science**

Applications:WB-Western Blot IHC-Immunohistochemistry IF-Immunofluorescence IP-Immunoprecipitation FC-Flow cytometry ChIP-Chromatin Immunoprecipitation Reactivity: H-Human R-Rat M-Mouse Mk-Monkey Dg-Dog Ch-Chicken Hm-Hamster Rb-Rabbit Sh-Sheep Pg-Pig Z-Zebrafish X-Xenopus C-Cow.