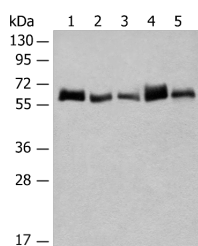


## CCDC47 Polyclonal Antibody

<b>Catalog No.</b>	E-AB-52648	<b>Reactivity</b>	H,M,R
<b>Storage</b>	Store at -20°C. Avoid freeze / thaw cycles.	<b>Host</b>	Rabbit
<b>Applications</b>	WB,ELISA	<b>Isotype</b>	IgG

**Note:** Centrifuge before opening to ensure complete recovery of vial contents.

### Images



Western blot analysis of K562 and A172 cell Human bladder transitional cell carcinoma grade 2-3 tissue NIH/3T3 cell Mouse liver tissue lysates using CCDC47 Polyclonal Antibody at dilution of 1:300

### Immunogen Information

<b>Immunogen</b>	Fusion protein of human CCDC47
<b>Gene Accession</b>	BC008905
<b>Swissprot</b>	Q96A33
<b>Synonyms</b>	CCD47,CCDC 47,CCDC47,Coiled coil domain containing 47,Coiled coil domain containing protein 47,Coiled-coil domain-containing protein 47,GK001,MSTP041

### Product Information

<b>Calculated MW</b>	56 kDa
<b>Observed MW</b>	Refer to figures
<b>Buffer</b>	PBS with 0.05% NaN <sub>3</sub> and 40% Glycerol,pH7.4
<b>Purify</b>	Antigen affinity purification
<b>Dilution</b>	WB 1:500-1:2000, ELISA 1:5000-1:10000

### Background

The coiled-coil domain is a common protein motif that is often involved in protein oligomerization and is found in proteins such as transcription factors and intermediate filaments. The CCDC47 gene maps to chromosome 17 at 17q23.3. Little is known about this single-pass membrane protein except that the coiled-coil domain is within the cytosolic domain near the carboxy terminus.

#### For Research Use Only

Thank you for your recent purchase.  
 If you would like to learn more about antibodies, please visit [www.elabscience.com](http://www.elabscience.com).

**Focus on your research  
 Service for life science**

Applications:WB-Western Blot IHC-Immunohistochemistry IF-Immunofluorescence IP-Immunoprecipitation FC-Flow cytometry ChIP-Chromatin Immunoprecipitation Reactivity: H-Human R-Rat M-Mouse Mk-Monkey Dg-Dog Ch-Chicken Hm-Hamster Rb-Rabbit Sh-Sheep Pg-Pig Z-Zebrafish X-Xenopus C-Cow.