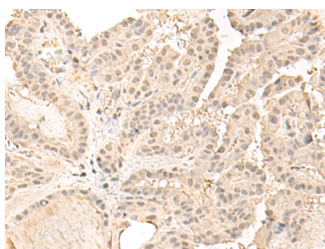


ZGPAT Polyclonal Antibody

Catalog No.	E-AB-52650	Reactivity	H
Storage	Store at -20°C. Avoid freeze / thaw cycles.	Host	Rabbit
Applications	IHC,ELISA	Isotype	IgG

Note: Centrifuge before opening to ensure complete recovery of vial contents.

Images



Immunohistochemistry of paraffin-embedded Human thyroid cancer tissue using ZGPAT Polyclonal Antibody at dilution of 1:35(×200)

Immunogen Information

Immunogen	Fusion protein of human ZGPAT
Gene Accession	BC019338
Swissprot	Q8N5A5
Synonyms	dJ583P15.3,FLJ14972,GPATC6,GPATCH6,KIAA1847,ZC3H9,ZC3HDC9,ZGPAT,ZIP

Product Information

Buffer	PBS with 0.05% NaN ₃ and 40% Glycerol,pH7.4
Purify	Antigen affinity purification
Dilution	IHC 1:40-1:200, ELISA 1:5000-1:10000

Background

ZGPAT (Zinc finger CCCH-type with G patch domain-containing protein), also known as zinc finger CCCH domain-containing protein 9 (ZC3HDC9) and G patch domain-containing protein 6 (GPATC6), is a 531 amino acid protein that contains a G-patch domain, which is typically found within RNA-binding proteins. Proteins that contain the G-patch domain include some tumor suppressor and DNA-damage repair proteins. ZGPAT also contains one C3H1-type zinc finger, which further supports its probable role as an RNA-binding protein. The gene encoding ZGPAT is inactivated via differential methylation in an oligodendroglioma cell line, suggesting that ZGPAT may have utility as a biomarker. There are two isoforms of ZGPAT that are produced as a result of alternative splicing events.

For Research Use Only

Thank you for your recent purchase.
 If you would like to learn more about antibodies, please visit www.elabscience.com.

**Focus on your research
 Service for life science**

Applications:WB-Western Blot IHC-Immunohistochemistry IF-Immunofluorescence IP-Immunoprecipitation FC-Flow cytometry ChIP-Chromatin Immunoprecipitation Reactivity: H-Human R-Rat M-Mouse Mk-Monkey Dg-Dog Ch-Chicken Hm-Hamster Rb-Rabbit Sh-Sheep Pg-Pig Z-Zebrafish X-Xenopus C-Cow.