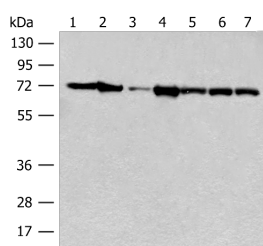


HSPA2 Polyclonal Antibody

| | | | |
|---------------------|---|-------------------|--------|
| Catalog No. | E-AB-52655 | Reactivity | H,M,R |
| Storage | Store at -20°C. Avoid freeze / thaw cycles. | Host | Rabbit |
| Applications | WB,ELISA | Isotype | IgG |

Note: Centrifuge before opening to ensure complete recovery of vial contents.

Images



Western blot analysis of Mouse brain tissue Human cerebrum tissue NIH/3T3 cell A549 cell Jurkat cell HeLa cell and 231 cell lysates using HSPA2 Polyclonal Antibody at dilution of 1:250

Immunogen Information

| | |
|-----------------------|---|
| Immunogen | Fusion protein of human HSPA2 |
| Gene Accession | BC036107 |
| Swissprot | P54652 |
| Synonyms | 70kDa,Hcp70.2,Heat shock 70 kDa protein 2,Heat-shock protein,70-KD,HSP72,HSP72,HSPA2,Hspt70,Hst70 |

Product Information

| | |
|----------------------|--|
| Calculated MW | 70 kDa |
| Observed MW | Refer to figures |
| Buffer | PBS with 0.05% NaN ₃ and 40% Glycerol,pH7.4 |
| Purify | Antigen affinity purification |
| Dilution | WB 1:500-1:2000, ELISA 1:5000-1:10000 |

Background

Human HSPA2 is a member of the HSPA (HSP70) family of heat-shock proteins, encoded by the gene originally described as testis-specific. Recently, it has been reported that HSPA2 can be also expressed in human somatic tissues in a cell-type specific manner. HSPA2 is a cytosol/nuclear protein able to translocate between cytoplasm and nucleus. HSPA2 is involved in sperm maturity, function and fertility. Aberrant expression of HSPA2 in testes has been connected with male infertility. Recently, HSPA2 has attracted increased interest due to its possible involvement in carcinogenesis of non-testicular tissues. This antibody well recognized the endogenous HSPA4 protein in testis and multiple cell lines. (21373891)

For Research Use Only

Thank you for your recent purchase.
 If you would like to learn more about antibodies, please visit www.elabscience.com.

**Focus on your research
 Service for life science**

Applications: WB-Western Blot IHC-Immunohistochemistry IF-Immunofluorescence IP-Immunoprecipitation FC-Flow cytometry ChIP-Chromatin Immunoprecipitation Reactivity: H-Human R-Rat M-Mouse Mk-Monkey Dg-Dog Ch-Chicken Hm-Hamster Rb-Rabbit Sh-Sheep Pg-Pig Z-Zebrafish X-Xenopus C-Cow.