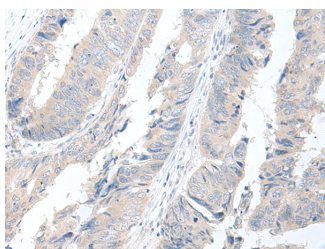


GBA2 Polyclonal Antibody

Catalog No.	E-AB-52669	Reactivity	H,M,R
Storage	Store at -20°C. Avoid freeze / thaw cycles.	Host	Rabbit
Applications	IHC,ELISA	Isotype	IgG

Note: Centrifuge before opening to ensure complete recovery of vial contents.

Images



Immunohistochemistry of paraffin-embedded Human colorectal cancer tissue using GBA2 Polyclonal Antibody at dilution of 1:55(×200)

Immunogen Information

Immunogen	Fusion protein of human GBA2
Gene Accession	BC011363
Swissprot	Q9HCG7
Synonyms	AD035,KIAA1605,MGC16895,NLGase,Non lysosomal glucosylceramidase,SPG46

Product Information

Buffer	PBS with 0.05% Na ₃ N and 40% Glycerol,pH7.4
Purify	Antigen affinity purification
Dilution	IHC 1:50-1:300, ELISA 1:5000-1:10000

Background

This gene encodes a microsomal beta-glucosidase that catalyzes the hydrolysis of bile acid 3-O-glucosides as endogenous compounds. Studies to determine subcellular localization of this protein in the liver indicated that the enzyme was mainly enriched in the microsomal fraction where it appeared to be confined to the endoplasmic reticulum. This putative transmembrane protein is thought to play a role in carbohydrate transport and metabolism.

For Research Use Only

Thank you for your recent purchase.
 If you would like to learn more about antibodies, please visit www.elabscience.com.

**Focus on your research
 Service for life science**

Applications:WB-Western Blot IHC-Immunohistochemistry IF-Immunofluorescence IP-Immunoprecipitation FC-Flow cytometry ChIP-Chromatin Immunoprecipitation Reactivity: H-Human R-Rat M-Mouse Mk-Monkey Dg-Dog Ch-Chicken Hm-Hamster Rb-Rabbit Sh-Sheep Pg-Pig Z-Zebrafish X-Xenopus C-Cow.