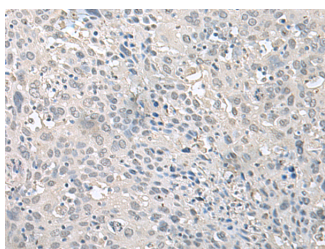


## EPM2A Polyclonal Antibody

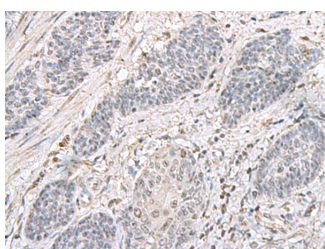
<b>Catalog No.</b>	E-AB-52671	<b>Reactivity</b>	H,M,R
<b>Storage</b>	Store at -20°C. Avoid freeze / thaw cycles.	<b>Host</b>	Rabbit
<b>Applications</b>	IHC,ELISA	<b>Isotype</b>	IgG

**Note:** Centrifuge before opening to ensure complete recovery of vial contents.

### Images



Immunohistochemistry of paraffin-embedded Human cervical cancer tissue using EPM2A Polyclonal Antibody at dilution of 1:75(×200)



Immunohistochemistry of paraffin-embedded Human esophagus cancer tissue using EPM2A Polyclonal Antibody at dilution of 1:75(×200)

### Immunogen Information

<b>Immunogen</b>	Fusion protein of human EPM2A
<b>Gene Accession</b>	BC005286
<b>Swissprot</b>	O95278
<b>Synonyms</b>	EPM2,Epm2a,Epm2a gene,EPM2A,Lafora PTPase,L aforin,LAFPTPase,LD,LDE,MELF,RP3-466P17.2

### Product Information

<b>Buffer</b>	PBS with 0.05% NaN3 and 40% Glycerol,pH7.4
<b>Purify</b>	Antigen affinity purification
<b>Dilution</b>	IHC 1:50-1:300, ELISA 1:5000-1:10000

### Background

This gene encodes a dual-specificity phosphatase that associates with polyribosomes. The encoded protein may be involved in the regulation of glycogen metabolism. Mutations in this gene have been associated with myoclonic epilepsy of Lafora. Alternative splicing results in multiple transcript variants.

#### For Research Use Only

Thank you for your recent purchase.  
 If you would like to learn more about antibodies, please visit [www.elabscience.com](http://www.elabscience.com).

**Focus on your research  
 Service for life science**

Applications:WB-Western Blot IHC-Immunohistochemistry IF-Immunofluorescence IP-Immunoprecipitation FC-Flow cytometry ChIP-Chromatin Immunoprecipitation Reactivity: H-Human R-Rat M-Mouse Mk-Monkey Dg-Dog Ch-Chicken Hm-Hamster Rb-Rabbit Sh-Sheep Pg-Pig Z-Zebrafish X-Xenopus C-Cow.