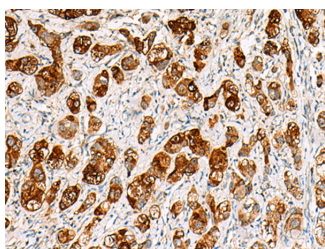


SAA1 Polyclonal Antibody

Catalog No.	E-AB-52681	Reactivity	H
Storage	Store at -20°C. Avoid freeze / thaw cycles.	Host	Rabbit
Applications	IHC,ELISA	Isotype	IgG

Note: Centrifuge before opening to ensure complete recovery of vial contents.

Images



Immunohistochemistry of paraffin-embedded Human liver cancer tissue using SAA1 Polyclonal Antibody at dilution of 1:70(×200)

Immunogen Information

Immunogen	Fusion protein of human SAA1
Gene Accession	BC007022
Swissprot	P0DJ18
Synonyms	amyloid A,serum,PIG4,SAA,SAA2,serum amyloid A1,Tumor protein p53 inducible protein 4

Product Information

Buffer	PBS with 0.05% NaN ₃ and 40% Glycerol,pH7.4
Purify	Antigen affinity purification
Dilution	IHC 1:100-1:300, ELISA 1:5000-1:10000

Background

This gene encodes a member of the serum amyloid A family of apolipoproteins. The encoded preproprotein is proteolytically processed to generate the mature protein. This protein is a major acute phase protein that is highly expressed in response to inflammation and tissue injury. This protein also plays an important role in HDL metabolism and cholesterol homeostasis. High levels of this protein are associated with chronic inflammatory diseases including atherosclerosis, rheumatoid arthritis, Alzheimer's disease and Crohn's disease. This protein may also be a potential biomarker for certain tumors. Alternate splicing results in multiple transcript variants that encode the same protein. A pseudogene of this gene is found on chromosome 11. SAA1 (Serum Amyloid A1) is a Protein Coding gene. Diseases associated with SAA1 include Amyloidosis Aa and Splenic Artery Aneurysm. Among its related pathways are Peptide ligand-binding receptors and Activated TLR4 signalling. GO annotations related to this gene include heparin binding and chemoattractant activity. An important paralog of this gene is SAA2.

For Research Use Only

Thank you for your recent purchase.
 If you would like to learn more about antibodies, please visit www.elabscience.com.

**Focus on your research
 Service for life science**

Applications:WB-Western Blot IHC-Immunohistochemistry IF-Immunofluorescence IP-Immunoprecipitation FC-Flow cytometry ChIP-Chromatin Immunoprecipitation Reactivity: H-Human R-Rat M-Mouse Mk-Monkey Dg-Dog Ch-Chicken Hm-Hamster Rb-Rabbit Sh-Sheep Pg-Pig Z-Zebrafish X-Xenopus C-Cow.