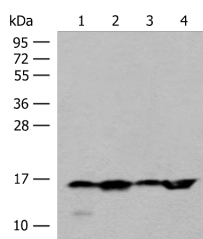


## MAGOHB Polyclonal Antibody

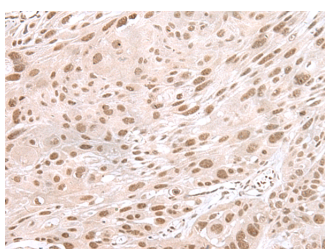
|                     |   |                   |        |
|---------------------|---|-------------------|--------|
| <b>Catalog No.</b>  | E-AB-52691                                  | <b>Reactivity</b> | H,M    |
| <b>Storage</b>      | Store at -20°C. Avoid freeze / thaw cycles. | <b>Host</b>       | Rabbit |
| <b>Applications</b> | WB,IHC,ELISA                                | <b>Isotype</b>    | IgG    |

**Note:** Centrifuge before opening to ensure complete recovery of vial contents.

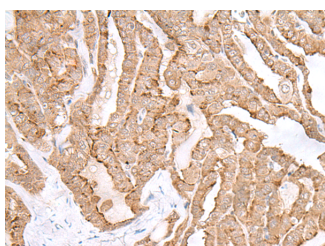
### Images



Western blot analysis of 293T HeLa and Jurkat cell lysates using MAGOHB Polyclonal Antibody at dilution of 1:400



Immunohistochemistry of paraffin-embedded Human esophagus cancer tissue using MAGOHB Polyclonal Antibody at dilution of 1:60(x200)



Immunohistochemistry of paraffin-embedded Human thyroid cancer tissue using MAGOHB Polyclonal Antibody at dilution of 1:60(x200)

### Immunogen Information

|                       |  |
|-----------------------|--|
| <b>Immunogen</b>      | Fusion protein of human MAGOHB   |
| <b>Gene Accession</b> | BC010905   |
| <b>Swissprot</b>      | Q96A72   |
| <b>Synonyms</b>       | FLJ10292,MAGO,Mago nashi homolog 2,Mago nashi homolog B,MAGOH,MAGOH2,MAGOHB,MGN2,MGN2,Protein mago nashi homolog 2 |

### Product Information

|                      |  |
|----------------------|--|
| <b>Calculated MW</b> | 17 kDa   |
| <b>Observed MW</b>   | Refer to figures                                       |
| <b>Buffer</b>        | PBS with 0.05% NaN <sub>3</sub> and 40% Glycerol,pH7.4 |
| <b>Purify</b>        | Antigen affinity purification                          |
| <b>Dilution</b>      | WB 1:500-1:2000, IHC 1:50-1:300, ELISA 1:5000-1:10000  |

### Background

Involved in mRNA splicing and in the nonsense-mediated decay (NMD) pathway.

#### For Research Use Only

Thank you for your recent purchase.  
 If you would like to learn more about antibodies, please visit [www.elabscience.com](http://www.elabscience.com).

**Focus on your research**  
**Service for life science**

Applications:WB-Western Blot IHC-Immunohistochemistry IF-Immunofluorescence IP-Immunoprecipitation FC-Flow cytometry ChIP-Chromatin Immunoprecipitation Reactivity: H-Human R-Rat M-Mouse Mk-Monkey Dg-Dog Ch-Chicken Hm-Hamster Rb-Rabbit Sh-Sheep Pg-Pig Z-Zebrafish X-Xenopus C-Cow.