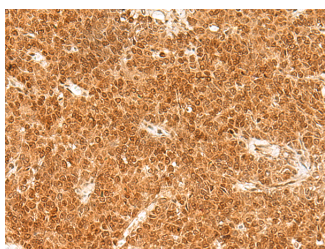


TOR1A Polyclonal Antibody

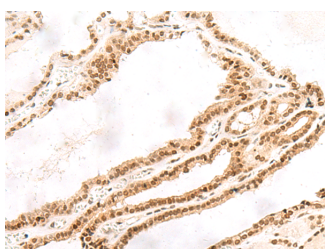
Catalog No.	E-AB-52709	Reactivity	H
Storage	Store at -20°C. Avoid freeze / thaw cycles.	Host	Rabbit
Applications	IHC,ELISA	Isotype	IgG

Note: Centrifuge before opening to ensure complete recovery of vial contents.

Images



Immunohistochemistry of paraffin-embedded Human ovarian cancer tissue using TOR1A Polyclonal Antibody at dilution of 1:30(×200)



Immunohistochemistry of paraffin-embedded Human thyroid cancer tissue using TOR1A Polyclonal Antibody at dilution of 1:30(×200)

Immunogen Information

Immunogen	Fusion protein of human TOR1A
Gene Accession	BC014484
Swissprot	O14656
Synonyms	DQ2,Dystonia 1,Dyt1,TOR1A,TOR1A,Torsin 1A,Torsin A,Torsin family 1,Torsin-1A

Product Information

Buffer	PBS with 0.05% NaN3 and 40% Glycerol,pH7.4
Purify	Antigen affinity purification
Dilution	IHC 1:40-1:200, ELISA 1:5000-1:10000

Background

The protein encoded by this gene is a member of the AAA family of adenosine triphosphatases (ATPases), is related to the Clp protease/heat shock family and is expressed prominently in the substantia nigra pars compacta. Mutations in this gene result in the autosomal dominant disorder, torsion dystonia 1.

For Research Use Only

Thank you for your recent purchase.
 If you would like to learn more about antibodies, please visit www.elabscience.com.

**Focus on your research
 Service for life science**

Applications:WB-Western Blot IHC-Immunohistochemistry IF-Immunofluorescence IP-Immunoprecipitation FC-Flow cytometry ChIP-Chromatin Immunoprecipitation Reactivity: H-Human R-Rat M-Mouse Mk-Monkey Dg-Dog Ch-Chicken Hm-Hamster Rb-Rabbit Sh-Sheep Pg-Pig Z-Zebrafish X-Xenopus C-Cow.