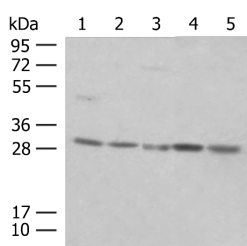


## PSMA4 Polyclonal Antibody

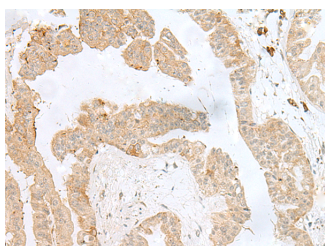
<b>Catalog No.</b>	E-AB-52721	<b>Reactivity</b>	H,M,R
<b>Storage</b>	Store at -20°C. Avoid freeze / thaw cycles.	<b>Host</b>	Rabbit
<b>Applications</b>	WB,IHC,ELISA	<b>Isotype</b>	IgG

**Note:** Centrifuge before opening to ensure complete recovery of vial contents.

### Images



Western blot analysis of NIH/3T3 cell Mouse spleen tissue K562 cell Hela cell 231 cell lysates using PSMA4 Polyclonal Antibody at dilution of 1:400



Immunohistochemistry of paraffin-embedded Human liver cancer tissue using PSMA4 Polyclonal Antibody at dilution of 1:50(×200)

### Immunogen Information

<b>Immunogen</b>	Fusion protein of human PSMA4
<b>Gene Accession</b>	BC005361
<b>Swissprot</b>	P25789
<b>Synonyms</b>	HC9 ,HsT17706,MGC111191,MGC12467,MGC24813,PSA4,PSC9 ,PSMA 4,psmA4

### Product Information

<b>Calculated MW</b>	29 kDa
<b>Observed MW</b>	Refer to figures
<b>Buffer</b>	PBS with 0.05% NaN3 and 40% Glycerol,pH7.4
<b>Purify</b>	Antigen affinity purification
<b>Dilution</b>	WB 1:500-1:2000, IHC 1:40-1:200, ELISA 1:5000-1:10000

### Background

This gene encodes a core alpha subunit of the 20S proteasome, which is a highly ordered ring-shaped structure composed of four rings of 28 non-identical subunits. Proteasomes cleave peptides in an ATP- and ubiquitin-dependent manner.

#### For Research Use Only

Thank you for your recent purchase.  
 If you would like to learn more about antibodies, please visit [www.elabscience.com](http://www.elabscience.com).

**Focus on your research  
 Service for life science**

Applications:WB-Western Blot IHC-Immunohistochemistry IF-Immunofluorescence IP-Immunoprecipitation FC-Flow cytometry ChIP-Chromatin Immunoprecipitation Reactivity: H-Human R-Rat M-Mouse Mk-Monkey Dg-Dog Ch-Chicken Hm-Hamster Rb-Rabbit Sh-Sheep Pg-Pig Z-Zebrafish X-Xenopus C-Cow.