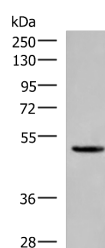


PSMD12 Polyclonal Antibody

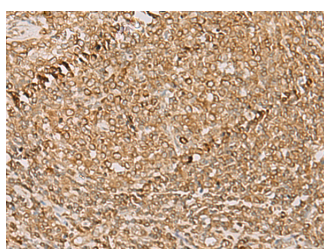
| | | | |
|---------------------|---|-------------------|--------|
| Catalog No. | E-AB-52752 | Reactivity | H,M,R |
| Storage | Store at -20°C. Avoid freeze / thaw cycles. | Host | Rabbit |
| Applications | WB,IHC,ELISA | Isotype | IgG |

Note: Centrifuge before opening to ensure complete recovery of vial contents.

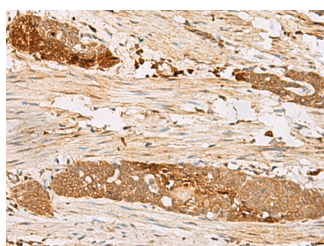
Images



Western blot analysis of Human cerebrum tissue lysate using PSMD12 Polyclonal Antibody at dilution of 1:900



Immunohistochemistry of paraffin-embedded Human tonsil tissue using PSMD12 Polyclonal Antibody at dilution of 1:50(×200)



Immunohistochemistry of paraffin-embedded Human esophagus cancer tissue using PSMD12 Polyclonal Antibody at dilution of 1:50(×200)

Immunogen Information

| | |
|-----------------------|--|
| Immunogen | Fusion protein of human PSMD12 |
| Gene Accession | BC019062 |
| Swissprot | O00232 |
| Synonyms | 26S proteasome regulatory subunit RPN5,MGC75406,PSMD12,Rpn5 |

Product Information

| | |
|----------------------|---|
| Calculated MW | 53 kDa |
| Observed MW | Refer to figures |
| Buffer | PBS with 0.05% NaN ₃ and 40% Glycerol,pH7.4 |
| Purify | Antigen affinity purification |
| Dilution | WB 1:1000-1:5000, IHC 1:50-1:300, ELISA 1:5000-1:10000 |

Background

The 26S proteasome is a multicatalytic proteinase complex with a highly ordered structure composed of 2 complexes, a 20S core and a 19S regulator. The 20S core is composed of 4 rings of 28 non-identical subunits; 2 rings are composed of 7 alpha subunits and 2 rings are composed of 7 beta subunits. The 19S regulator is composed of a base, which contains 6 ATPase subunits and 2 non-ATPase subunits, and a lid, which contains up to 10 non-ATPase subunits. Proteasomes are distributed throughout eukaryotic cells at a high concentration and cleave peptides in an ATP/ubiquitin-dependent process in a non-lysosomal pathway. An essential function of a modified proteasome, the immunoproteasome, is the processing of class I MHC peptides. This gene encodes a non-ATPase subunit of the 19S regulator. A pseudogene has been identified on chromosome 3. Alternatively spliced transcript variants encoding different isoforms have been found for this gene.

For Research Use Only

Thank you for your recent purchase.
 If you would like to learn more about antibodies, please visit www.elabscience.com.

Focus on your research
Service for life science

Applications:WB-Western Blot IHC-Immunohistochemistry IF-Immunofluorescence IP-Immunoprecipitation FC-Flow cytometry ChIP-Chromatin Immunoprecipitation Reactivity: H-Human R-Rat M-Mouse Mk-Monkey Dg-Dog Ch-Chicken Hm-Hamster Rb-Rabbit Sh-Sheep Pg-Pig Z-Zebrafish X-Xenopus C-Cow.