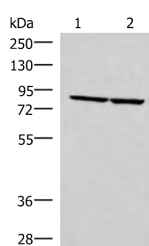


ABLIM3 Polyclonal Antibody

Catalog No.	E-AB-52758	Reactivity	H,M,R
Storage	Store at -20°C. Avoid freeze / thaw cycles.	Host	Rabbit
Applications	WB,ELISA	Isotype	IgG

Note: Centrifuge before opening to ensure complete recovery of vial contents.

Images



Western blot analysis of PC3 and NIH/3T3 cell lysates using ABLIM3 Polyclonal Antibody at dilution of 1:400

Immunogen Information

Immunogen	Fusion protein of human ABLIM3
Gene Accession	BC001665
Swissprot	O94929
Synonyms	abLIM-3,Ablim3,ABLM3,Actin binding LIM protein 3,HMFN1661,KIAA0843

Product Information

Calculated MW	78 kDa
Observed MW	Refer to figures
Buffer	PBS with 0.05% NaN ₃ and 40% Glycerol,pH7.4
Purify	Antigen affinity purification
Dilution	WB 1:500-1:2000, ELISA 1:5000-1:10000

Background

This gene encodes a member of the actin-binding LIM (abLIM) family of proteins. These proteins are characterized by an N-terminal LIM domain and a C-terminal dematin-like domain. The encoded protein interacts with actin filaments and may be a component of adherens junctions in several cell types. A variant of this gene may be associated with pain sensitivity in male human patients.

For Research Use Only

Thank you for your recent purchase.

If you would like to learn more about antibodies, please visit www.elabscience.com.

**Focus on your research
 Service for life science**

Applications:WB-Western Blot IHC-Immunohistochemistry IF-Immunofluorescence IP-Immunoprecipitation FC-Flow cytometry ChIP-Chromatin Immunoprecipitation Reactivity: H-Human R-Rat M-Mouse Mk-Monkey Dg-Dog Ch-Chicken Hm-Hamster Rb-Rabbit Sh-Sheep Pg-Pig Z-Zebrafish X-Xenopus C-Cow.