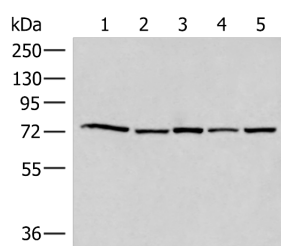


## ATMIN Polyclonal Antibody

|                     |                                             |                   |        |
|---------------------|---------------------------------------------|-------------------|--------|
| <b>Catalog No.</b>  | E-AB-52768                                  | <b>Reactivity</b> | H,M    |
| <b>Storage</b>      | Store at -20°C. Avoid freeze / thaw cycles. | <b>Host</b>       | Rabbit |
| <b>Applications</b> | WB,ELISA                                    | <b>Isotype</b>    | IgG    |

**Note:** Centrifuge before opening to ensure complete recovery of vial contents.

### Images



Western blot analysis of 293T HeLa HepG2 231 and TM4 cell lysates using ATMIN Polyclonal Antibody at dilution of 1:500

### Immunogen Information

|                       |                                                                                     |
|-----------------------|-------------------------------------------------------------------------------------|
| <b>Immunogen</b>      | Fusion protein of human ATMIN                                                       |
| <b>Gene Accession</b> | BC002701                                                                            |
| <b>Swissprot</b>      | O43313                                                                              |
| <b>Synonyms</b>       | ASCIZ,ATM Interacting protein,ATM interactor,Zinc finger protein 822,ZNF 822,ZNF822 |

### Product Information

|                      |                                                        |
|----------------------|--------------------------------------------------------|
| <b>Calculated MW</b> | 88 kDa                                                 |
| <b>Observed MW</b>   | Refer to figures                                       |
| <b>Buffer</b>        | PBS with 0.05% NaN <sub>3</sub> and 40% Glycerol,pH7.4 |
| <b>Purify</b>        | Antigen affinity purification                          |
| <b>Dilution</b>      | WB 1:500-1:2000, ELISA 1:5000-1:10000                  |

### Background

Transcription factor. Plays a crucial role in cell survival and RAD51 foci formation in response to methylating DNA damage. Involved in regulating the activity of ATM in the absence of DNA damage. May play a role in stabilizing ATM. Binds to the DYNLL1 promoter and activates its transcription.

#### For Research Use Only

Thank you for your recent purchase.  
 If you would like to learn more about antibodies, please visit [www.elabscience.com](http://www.elabscience.com).

**Focus on your research  
 Service for life science**

Applications:WB-Western Blot IHC-Immunohistochemistry IF-Immunofluorescence IP-Immunoprecipitation FC-Flow cytometry ChIP-Chromatin Immunoprecipitation Reactivity: H-Human R-Rat M-Mouse Mk-Monkey Dg-Dog Ch-Chicken Hm-Hamster Rb-Rabbit Sh-Sheep Pg-Pig Z-Zebrafish X-Xenopus C-Cow.