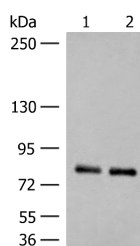


## NGEF Polyclonal Antibody

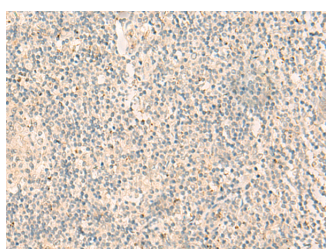
<b>Catalog No.</b>	E-AB-52771	<b>Reactivity</b>	H,M,R
<b>Storage</b>	Store at -20°C. Avoid freeze / thaw cycles.	<b>Host</b>	Rabbit
<b>Applications</b>	WB,IHC,ELISA	<b>Isotype</b>	IgG

**Note:** Centrifuge before opening to ensure complete recovery of vial contents.

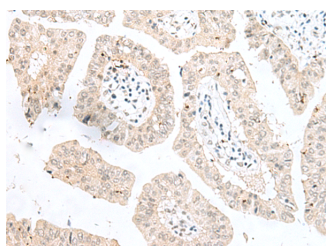
### Images



Western blot analysis of Rat brain tissue and Mouse brain tissue lysates using NGEF Polyclonal Antibody at dilution of 1:250



Immunohistochemistry of paraffin-embedded Human tonsil tissue using NGEF Polyclonal Antibody at dilution of 1:35(x200)



Immunohistochemistry of paraffin-embedded Human liver cancer tissue using NGEF Polyclonal Antibody at dilution of 1:35(x200)

### Immunogen Information

<b>Immunogen</b>	Fusion protein of human NGEF
<b>Gene Accession</b>	BC031573
<b>Swissprot</b>	Q8N5V2
<b>Synonyms</b>	ARHGEF27,EPHEXIN,Ephexin-1,Neuronal guanine nucleotide exchange factor,Ngef,NGEF

### Product Information

<b>Calculated MW</b>	82 kDa
<b>Observed MW</b>	Refer to figures
<b>Buffer</b>	PBS with 0.05% NaN <sub>3</sub> and 40% Glycerol,pH7.4
<b>Purify</b>	Antigen affinity purification
<b>Dilution</b>	WB 1:500-1:2000, IHC 1:30-1:150, ELISA 1:5000-1:10000

### Background

Acts as a guanine nucleotide exchange factor (GEF) which differentially activates the GTPases RHOA, RAC1 and CDC42. Plays a role in axon guidance regulating ephrin-induced growth cone collapse and dendritic spine morphogenesis. Upon activation by ephrin through EPHA4, the GEF activity switches toward RHOA resulting in its activation. Activated RHOA promotes cone retraction at the expense of RAC1- and CDC42-stimulated growth cone extension (By similarity).

### For Research Use Only

Thank you for your recent purchase.  
 If you would like to learn more about antibodies, please visit [www.elabscience.com](http://www.elabscience.com).

**Focus on your research  
 Service for life science**

Applications:WB-Western Blot IHC-Immunohistochemistry IF-Immunofluorescence IP-Immunoprecipitation FC-Flow cytometry ChIP-Chromatin Immunoprecipitation Reactivity: H-Human R-Rat M-Mouse Mk-Monkey Dg-Dog Ch-Chicken Hm-Hamster Rb-Rabbit Sh-Sheep Pg-Pig Z-Zebrafish X-Xenopus C-Cow.