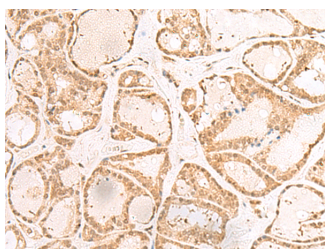


RBM19 Polyclonal Antibody

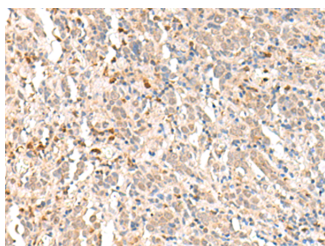
Catalog No.	E-AB-52785	Reactivity	H,M
Storage	Store at -20°C. Avoid freeze / thaw cycles.	Host	Rabbit
Applications	IHC,ELISA	Isotype	IgG

Note: Centrifuge before opening to ensure complete recovery of vial contents.

Images



Immunohistochemistry of paraffin-embedded Human thyroid cancer tissue using RBM19 Polyclonal Antibody at dilution of 1:30(×200)



Immunohistochemistry of paraffin-embedded Human cervical cancer tissue using RBM19 Polyclonal Antibody at dilution of 1:30(×200)

Immunogen Information

Immunogen	Fusion protein of human RBM19
Gene Accession	BC004289
Swissprot	Q9Y4C8
Synonyms	1200009A02Rik,AV302714,NPO,Probable RNA-binding protein 19,RBM19,RBM19,RNA-binding motif protein 19

Product Information

Buffer	PBS with 0.05% NaN ₃ and 40% Glycerol,pH7.4
Purify	Antigen affinity purification
Dilution	IHC 1:30-1:150, ELISA 1:5000-1:10000

Background

This gene encodes a nucleolar protein that contains six RNA-binding motifs. The encoded protein may be involved in regulating ribosome biogenesis. Multiple alternatively spliced variants, encoding the same protein, have been identified.

For Research Use Only

Thank you for your recent purchase.
 If you would like to learn more about antibodies, please visit www.elabscience.com.

**Focus on your research
 Service for life science**

Applications:WB-Western Blot IHC-Immunohistochemistry IF-Immunofluorescence IP-Immunoprecipitation FC-Flow cytometry ChIP-Chromatin Immunoprecipitation Reactivity: H-Human R-Rat M-Mouse Mk-Monkey Dg-Dog Ch-Chicken Hm-Hamster Rb-Rabbit Sh-Sheep Pg-Pig Z-Zebrafish X-Xenopus C-Cow.