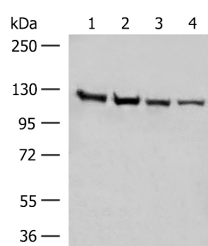


## IPO11 Polyclonal Antibody

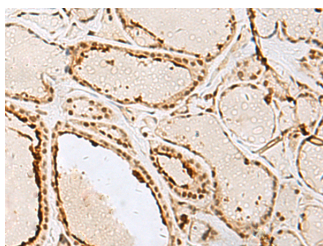
<b>Catalog No.</b>	E-AB-52788	<b>Reactivity</b>	H,M
<b>Storage</b>	Store at -20°C. Avoid freeze / thaw cycles.	<b>Host</b>	Rabbit
<b>Applications</b>	WB,IHC,ELISA	<b>Isotype</b>	IgG

**Note:** Centrifuge before opening to ensure complete recovery of vial contents.

### Images



Western blot analysis of Human fetal brain tissue K562 cell HeLa and A172 cell lysates using IPO11 Polyclonal Antibody at dilution of 1:450



Immunohistochemistry of paraffin-embedded Human thyroid cancer tissue using IPO11 Polyclonal Antibody at dilution of 1:65(×200)

### Immunogen Information

<b>Immunogen</b>	Fusion protein of human IPO11
<b>Gene Accession</b>	BC033776
<b>Swissprot</b>	Q9UI26
<b>Synonyms</b>	Imp11,Importin 11,Importin-11,IPO11,IPO11,Ran binding protein 11,Ran-binding protein 11,RanBP11,SLRN,Synleurin

### Product Information

<b>Calculated MW</b>	113 kDa
<b>Observed MW</b>	Refer to figures
<b>Buffer</b>	PBS with 0.05% NaN <sub>3</sub> and 40% Glycerol,pH7.4
<b>Purify</b>	Antigen affinity purification
<b>Dilution</b>	WB 1:500-1:2000, IHC 1:40-1:200, ELISA 1:5000-1:10000

### Background

Importins, including IPO11, are a members of the karyopherin/importin-beta family of transport receptors (see KPNB1; 602738) that mediate nucleocytoplasmic transport of protein and RNA cargoes (Plafker and Macara, 2000 [PubMed 11032817]).

#### For Research Use Only

Thank you for your recent purchase.  
 If you would like to learn more about antibodies, please visit [www.elabscience.com](http://www.elabscience.com).

**Focus on your research  
 Service for life science**

Applications:WB-Western Blot IHC-Immunohistochemistry IF-Immunofluorescence IP-Immunoprecipitation FC-Flow cytometry ChIP-Chromatin Immunoprecipitation Reactivity: H-Human R-Rat M-Mouse Mk-Monkey Dg-Dog Ch-Chicken Hm-Hamster Rb-Rabbit Sh-Sheep Pg-Pig Z-Zebrafish X-Xenopus C-Cow.