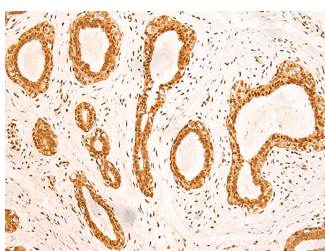


ZNF471 Polyclonal Antibody

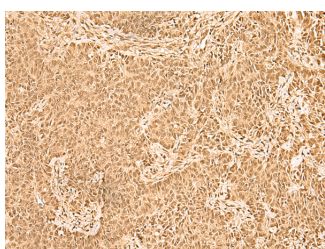
Catalog No.	E-AB-52793	Reactivity	H
Storage	Store at -20°C. Avoid freeze / thaw cycles.	Host	Rabbit
Applications	IHC,ELISA	Isotype	IgG

Note: Centrifuge before opening to ensure complete recovery of vial contents.

Images



Immunohistochemistry of paraffin-embedded Human breast cancer tissue using ZNF471 Polyclonal Antibody at dilution of 1:50(×200)



Immunohistochemistry of paraffin-embedded Human ovarian cancer tissue using ZNF471 Polyclonal Antibody at dilution of 1:50(×200)

Immunogen Information

Immunogen	Fusion protein of human ZNF471
Gene Accession	BC125221
Swissprot	Q9BX82
Synonyms	MGC150658,ERP1,EZFIT related protein 1,EZFIT-related protein 1,KIAA1396,MGC150657,Z1971,Zinc finger protein 471,ZN471,ZNF471

Product Information

Buffer	PBS with 0.05% Na ₃ N and 40% Glycerol,pH7.4
Purify	Antigen affinity purification
Dilution	IHC 1:50-1:300, ELISA 1:5000-1:10000

Background

This protein belongs to the krueppel C2H2-type zinc-finger protein family. It may be involved in transcriptional regulation. The subcellular location of this protein is Nucleus. It contains 15 C2H2-type zinc fingers and one KRAB domain.

For Research Use Only

Thank you for your recent purchase.
 If you would like to learn more about antibodies, please visit www.elabscience.com.

**Focus on your research
 Service for life science**

Applications:WB-Western Blot IHC-Immunohistochemistry IF-Immunofluorescence IP-Immunoprecipitation FC-Flow cytometry ChIP-Chromatin Immunoprecipitation Reactivity: H-Human R-Rat M-Mouse Mk-Monkey Dg-Dog Ch-Chicken Hm-Hamster Rb-Rabbit Sh-Sheep Pg-Pig Z-Zebrafish X-Xenopus C-Cow.