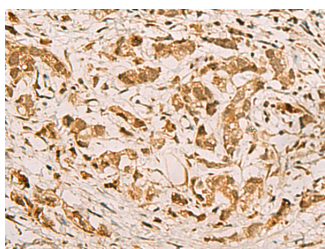


ZMAT4 Polyclonal Antibody

Catalog No.	E-AB-52816	Reactivity	H
Storage	Store at -20°C. Avoid freeze / thaw cycles.	Host	Rabbit
Applications	IHC,ELISA	Isotype	IgG

Note: Centrifuge before opening to ensure complete recovery of vial contents.

Images



Immunohistochemistry of paraffin-embedded Human gastric cancer tissue using ZMAT4 Polyclonal Antibody at dilution of 1:65(×200)

Immunogen Information

Immunogen	Fusion protein of human ZMAT4
Gene Accession	BC019598
Swissprot	Q9H898
Synonyms	Zinc finger matrin type 4,Zinc finger matrin-type protein 4,Zmat4,ZMAT4

Product Information

Buffer	PBS with 0.05% NaN ₃ and 40% Glycerol,pH7.4
Purify	Antigen affinity purification
Dilution	IHC 1:50-1:200, ELISA 1:5000-1:10000

Background

Zinc-finger proteins contain DNA-binding domains and have a wide variety of functions, most of which encompass some form of transcriptional activation or repression. Zinc finger matrin-type protein 4 (ZMAT4) is a 229 amino acid protein that contains four matrin-type zinc fingers. The matrin-type zinc finger, which is very similar in structure to the classical DNA-binding C₂H₂ zinc finger, was first identified in the protein matrin-3. It has also been identified in several spliceosome RNA-binding proteins, suggesting a role in pre-mRNA binding. ZMAT4 is localized to the nucleus, and two isoforms of this protein exist as a result of alternative splicing events.

For Research Use Only

Thank you for your recent purchase.
 If you would like to learn more about antibodies, please visit www.elabscience.com.

**Focus on your research
 Service for life science**

Applications:WB-Western Blot IHC-Immunohistochemistry IF-Immunofluorescence IP-Immunoprecipitation FC-Flow cytometry ChIP-Chromatin Immunoprecipitation Reactivity: H-Human R-Rat M-Mouse Mk-Monkey Dg-Dog Ch-Chicken Hm-Hamster Rb-Rabbit Sh-Sheep Pg-Pig Z-Zebrafish X-Xenopus C-Cow.