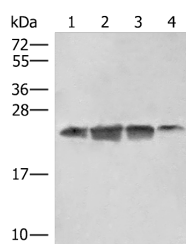


EIF3K Polyclonal Antibody

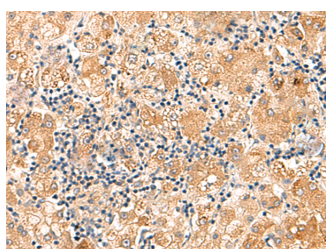
Catalog No.	E-AB-52855	Reactivity	H,M
Storage	Store at -20°C. Avoid freeze / thaw cycles.	Host	Rabbit
Applications	WB,IHC,ELISA	Isotype	IgG

Note: Centrifuge before opening to ensure complete recovery of vial contents.

Images



Western blot analysis of 293T HT29 and A172 cell lysates using EIF3K Polyclonal Antibody at dilution of 1:550



Immunohistochemistry of paraffin-embedded Human liver cancer tissue using EIF3K Polyclonal Antibody at dilution of 1:75(×200)

Immunogen Information

Immunogen	Fusion protein of human EIF3K
Gene Accession	BC001031
Swissprot	Q9UBQ5
Synonyms	ARG134,eIF 3 p25,eIF 3 p28,eIF-3 p25,eIF-3 p28,EIF3-p28,eif3k,EIF3K,EIF3S12

Product Information

Calculated MW	25 kDa
Observed MW	Refer to figures
Buffer	PBS with 0.05% NaN3 and 40% Glycerol,pH7.4
Purify	Antigen affinity purification
Dilution	WB 1:500-1:2000, IHC 1:50-1:300, ELISA 1:5000-1:10000

Background

The 700-kD eukaryotic translation initiation factor-3 (eIF3) is the largest eIF and contains at least 12 subunits, including EIF2S12. eIF3 plays an essential role in translation by binding directly to the 40S ribosomal subunit and promoting formation of the 40S preinitiation complex.

For Research Use Only

Thank you for your recent purchase.
 If you would like to learn more about antibodies, please visit www.elabscience.com.

**Focus on your research
 Service for life science**

Applications:WB-Western Blot IHC-Immunohistochemistry IF-Immunofluorescence IP-Immunoprecipitation FC-Flow cytometry ChIP-Chromatin Immunoprecipitation Reactivity: H-Human R-Rat M-Mouse Mk-Monkey Dg-Dog Ch-Chicken Hm-Hamster Rb-Rabbit Sh-Sheep Pg-Pig Z-Zebrafish X-Xenopus C-Cow.