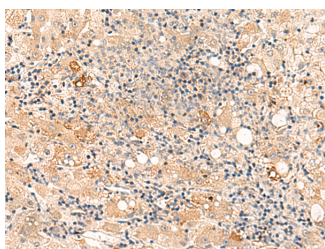


SULT4A1 Polyclonal Antibody

Catalog No.	E-AB-52867	Reactivity	H,M,R
Storage	Store at -20°C. Avoid freeze / thaw cycles.	Host	Rabbit
Applications	IHC,ELISA	Isotype	IgG

Note: Centrifuge before opening to ensure complete recovery of vial contents.

Images



Immunohistochemistry of paraffin-embedded Human liver cancer tissue using SULT4A1 Polyclonal Antibody at dilution of 1:50(×200)

Immunogen Information

Immunogen	Fusion protein of human SULT4A1
Gene Accession	BC028171
Swissprot	Q9BR01
Synonyms	BR STL 1, BRSTL1, DJ388M5.3, hBR STL 1, hBR STL, hBR-STL, hBR-STL-1, MGC40032

Product Information

Buffer	PBS with 0.05% NaN3 and 40% Glycerol, pH7.4
Purify	Antigen affinity purification
Dilution	IHC 1:50-1:300, ELISA 1:5000-1:10000

Background

SULT4A1, also named as SULTX3, NST, ST4A1, hBR-STL and hBR-STL-1, belongs to the sulfotransferase 1 family. It may catalyze the sulfate conjugation of many drugs, xenobiotic compounds, hormones, and neurotransmitters. SULT4A1 displays activity towards L-triiodothyronine, thyroxine, estrone, p-nitrophenol, 2-naphtylamine, and 2-naphtol. It may have a role in the sulfation of drugs and neurotransmitters in the CNS. SULT4A1 is a brain-specific sulfotransferase believed to be involved in the metabolism of neurotransmitters. It is a novel cytosolic sulfotransferase that is primarily expressed in the brain.

For Research Use Only

Thank you for your recent purchase.
 If you would like to learn more about antibodies, please visit www.elabscience.com.

**Focus on your research
 Service for life science**

Applications: WB-Western Blot IHC-Immunohistochemistry IF-Immunofluorescence IP-Immunoprecipitation FC-Flow cytometry ChIP-Chromatin Immunoprecipitation Reactivity: H-Human R-Rat M-Mouse Mk-Monkey Dg-Dog Ch-Chicken Hm-Hamster Rb-Rabbit Sh-Sheep Pg-Pig Z-Zebrafish X-Xenopus C-Cow.